

118TH
PRIDDIS & MILLARVILLE FAIR

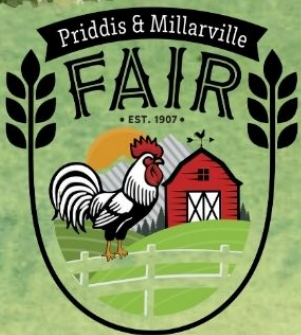
Country Fun

FOR EVERYONE



AUG. 16 & 17, 2025
9AM - 4PM
FREE ADMISSION

**DONATIONS
WELCOME**



PRIDDIS MILLARVILLE FAIR



THEPMFAIR

WWW.MILLARVILLERACETRACK.COM/PRIDDIS-MILLARVILLE-FAIR/



MRAS Land Acknowledgement: *The Millarville Racing and Agricultural Society would like to acknowledge that we are situated on the traditional territories of the peoples of the Treaty 7 region in Southern Alberta, which includes the Blackfoot Confederacy (including the Siksika, Piikani, and Kainai First Nations), the Stoney Nakoda (including the Chiniki, Bearspaw and Goodstoney First Nations), as well as the Tsuut'ina First Nation. In addition, this area is also home to the Metis Nation of Alberta, District 4. This acknowledgement is part of our journey towards reconciliation, and a way to respect and honour this land, as well as the diverse histories and cultures of the original occupants of this area.*

CONTENTS

WELCOME TO THE FAIR	4
DONORS & SPONSORS	5
EXHIBITING AT THE FAIR	7
QUICK REFERENCE GUIDE	8
ALBERTA BIRDS OF PREY	9
ANTIQUE AUTO, TRUCK, & ENGINE SHOW	9
DISCOVERY CARD	9
THE FARMYARD	9
FAIR RAFFLE	9
FLEECE TO SHAWL DEMONSTRATION	9
MILLARVILLE FARMERS' MARKET	10
PIE & QUILT AUCTION	10
STOCK DOGS IN ACTION	10
THE PM RANCH	10
ANTIQUE TRACTOR PULL & SHOW	11
FARM STRONG GAMES	12
LICKED SALT BLOCK COMPETITION (AKA "PASTURE ART")	13
HONEY COMPETITION	13
HORSE COSTUME COMPETITION	14
ROOSTER CROWING COMPETITION	14
PIE EATING COMPETITION	15
WATERMELON EATING COMPETITION	15
WESTERN LIGHT HORSE	16
LIGHT HORSE GYMKHANA	17
ENGLISH LIGHT HORSE	18
ARTS & HANDICRAFTS	20
ARTS & HANDICRAFTS - JUNIOR	22
FIBRE ARTS	25
FIBRE ARTS - JUNIOR	27
FIELD CROPS	28
FIELD CROPS - JUNIOR	30
FLOWERS	31
FLOWERS - JUNIOR	33
HOME COOKING & BAKING	35
HOME COOKING & BAKING - JUNIOR	38
PHOTOGRAPHY	40
PHOTOGRAPHY - JUNIOR	41
VEGETABLES & FRUIT	42
VEGETABLES & FRUIT - JUNIOR	44
WOODWORKING	46
WOODWORKING - JUNIOR	46
BEEF CATTLE	47
DAIRY GOATS	48
POULTRY, WATERFOWL & PIGEONS	52
RABBITS	54
SHEEP	55
COMPETITIONS ENTRY FORM	57
LIGHT HORSE ENTRY FORM	58
BENCH ENTRY FORM	59
FIBRE ARTS ENTRY FORM	60
BEEF CATTLE ENTRY FORM	61
DAIRY GOAT ENTRY FORM	62
POULTRY, WATERFOWL & PIGEONS ENTRY FORM	63
RABBIT ENTRY FORM	64
SHEEP ENTRY FORM	65
MAP & FAIR COMMITTEE MEMBERS & PHOTO CONTRIBUTORS	66
OUTSTANDING EXHIBITOR/CONTRIBUTOR AWARD RECIPIENTS	67





COUNTRY FUN FOR EVERYONE

The Millarville Racing & Agricultural Society and the Priddis Community Association are your proud co-hosts for this family-oriented event. The Priddis & Millarville Fair has provided country fun since 1907! Many things have changed over the decades, but some things have not. The Fair continues to be the best place in southern Alberta for friendly competition in a variety of bench departments, 3 horse shows for Light Horse Western, English and Gymkhana, and livestock shows for beef cattle, dairy goats, poultry, rabbits, and sheep.

This book lists all the ways you can participate as an exhibitor in a multitude of bench classes. There are always fun competitions - tractor pull, pie eating, watermelon eating, rooster crowing, horse costume, and the Farm Strong Games. Stock dog demonstrations, llama agility, pie & quilt auction, market vendors, make & take activities, and demonstrations all contribute to two days of fun for all ages on the third weekend in August. Check the [MRAS website](#) to learn about all the other attractions and activities planned for our visitors.

The Fair has partnered with Alberta Open Farm Days. This is a collaborative, province-wide, two-day event that gives Albertans an opportunity to understand where their food comes from. Visit [About Alberta Open Farm Days](#) to plan your trip to the Fair and farms in the area that are participating.

Welcome to the Fair!

Priddis & Millarville Fair - Volunteer Organizing Committee



Thank you to all our generous fair donors, company sponsors and photo contributors!

BENEFACTORS OF THE FAIR

NAME	DESIGNATION
422089 Alberta Ltd. AgTek 360	Fair Luncheon Farm Strong Games, Field Crops, Field Crops Jr, Rooster Crowing Competition, Tractor Pull, Vegetables & Fruit, Vegetable & Fruit Jr
Benediktson Family Gwen & Wayne Blatz Blue Ridge Excavating	Flowers Home Cooking & Baking Arts & Handicraft Jr, Home Cooking & Baking Adult & Jr, Fruit & Vegetables, General
Cathro Family Hawkview Charolais Hulleman Farms Hay Sales Bill & Edith Jackson Melodie & Derek Lalonde Lana Shea Consulting Inc May & John Lockhart Millarville Horticultural Club Ralph & Diane Onciul Mike & Barb Parker Judi Powell Red Deer Lake Meat Processing Ltd Scott Daniel Seaman Fund Valerie Seaman Sheep Creek Arts Council Sheep Creek Weavers Sills Family Yvonne Sterrenberg The Plane Girls - Donna Kendall & Riel Erickson Patty Webb Western Wrangler Construction	General - Discovery Card Beef Cattle Tractor Pull, General Vegetables & Fruit, General Jr Fiber Arts, Birds of Prey Western Horse General Flowers, Flowers Jr, Vegetables & Fruit, Vegetables & Fruit Jr Field Crops Photography, Photography Jr Arts & Handicrafts Jr Sheep Flowers Jr, Vegetables & Fruit Jr Birds of Prey Arts & Handicrafts, Arts & Handicrafts Jr, Fibre Arts, Photography Fibre Arts Birds of Prey, General Arts & Handicrafts Fibre Arts Home Cooking & Baking, Home Cooking & Baking Jr Dairy Goats, Poultry

PATRONS OF THE FAIR

NAME	DESIGNATION
Don & Kathleen Arkes Gerald & Sandra Bull Barb Castell Chinook Llama & Alpaca Club Barb & Cliff Larson Rediscover Play Nature Schools Gillian Ross Cathie Scatterty Linda Schaal Square Butte Ladies Group Joyce Teskey Gerry Tofin Allan & Joan Tosh Mary Ann Watson White Moose Ranch	Flowers, Beef Cattle, Dairy Goats, Poultry, Sheep Flower Jr, Home Cooking & Baking Jr Flowers Farm Yard Photography Adult & Jr Arts & Handicrafts Jr Home Cooking & Baking Home Cooking & Baking, Woodworking Jr Gymkhana, Beef Cattle, Home Cooking & Baking, Arts & Handicrafts Jr, Home Cooking & Baking Jr Fibre Art Jr General General Flowers Arts & Handicrafts

Thank you to all our generous fair donors, company sponsors and photo contributors!

FRIENDS OF THE FAIR

NAME	DESIGNATION
David & Jody Ball	Flowers Jr, Vegetables & Fruit Jr
Neil & Di Bates	Woodworking, Woodworking Jr
Theresa Boyce	Home Cooking & Baking, Home Cooking & Baking Jr
Dale & Joe Burritt	Home Cooking & Baking, Home Cooking & Baking Jr
Neal Campbell	Fibre Arts - Epic Project
Jo-Ann Collins	Home Cooking & Baking Adult & Jr, Woodworking Jr, Light Horse Western,
Harry Cowan	Home Cooking & Baking, Flowers
Frances Dover	Flowers Jr
Kathy Flundra	Home Cooking & Baking
Betty Foran	Honey Competition
Brenda Geiger	Home Cooking & Baking
Lauren Hitchner	Home Cooking & Baking
Donna Kendall	Fibre Arts, Flowers, Woodworking, General
Doreen Marthaller	General
Kathy McCabe	Photography, Photography Jr
Sandra Neish	Flowers, Home Cooking & Baking, Fibre Arts
Pat & Arlene O'Brien	Vegetables & Fruit Jr
Origin Partners	Field Crops
Louise Patterson Bruns	Flowers, Flowers Jr
Julie & Bill Thomson	Photography, Photography Jr
Turner Valley Oilfield Camera Club	Photography, Photography Jr
Sheila Virgo	Fibre Arts

SUPPORTERS OF THE FAIR

NAME	DESIGNATION
Jeanne Brkich	Home Cooking & Baking
Shirley Goerlitz	Flowers Jr, Vegetables & Fruit Jr
Diana Hocking	Home Cooking & Baking
Barb Parker	Licked Salt Block
Carmen Peccie	Flowers Jr
Richardson Family	Home Cooking & Baking

PHOTO CONTRIBUTORS

Kathleen Arkes	Lindsay Estey
Hope Barakat	Gervais Goodman
Lorraine Cathro	Carol Papworth
Rick Charlton	Edie Pujo
Cathie Dallas	Yvonne Sterrenberg
Angie Dawson	



EXHIBITING AT THE FAIR

INFORMATION FOR ALL EXHIBITORS

- Anyone can exhibit at the Fair!
- Junior exhibitors may enter in an age group higher, but not lower than their own age.
- Age for junior exhibitors is as of January 1, 2025, unless exceptions are specified.
- Exhibit classes and rules are listed in this book.
- Printed copies of the Fair Book are available at the MRAS office, the Millarville General Store, the Priddis General Store, the Millarville Community Library, the Sheep River Library, and the High River County office, while they last. An electronic copy can be downloaded from the [MRAS website](https://www.mras.ca/) after June 1, 2025.
- Once you know what classes you wish to enter, register online at <https://www.assistexpo.ca/priddis-millarville-fair> commencing June 1, 2025, or use the entry forms at the back of the Fair Book.
- If registering in any way other than online:
 - email the scanned entry form or a clear photo of the form to fair@millarvilleracetrack.com.
 - drop the entry form at the MRAS office at the Millarville Racetrack, 306097 192 St W, Foothills County, AB.
 - mail the entry form to MRAS, Box 68, Millarville AB, T0L 1K0, Attention: Fair Treasurer.

ENTRY FEES

- Each exhibitor pays an annual \$5 registration fee.
- Each class entry is charged a fee that is listed for each department.
- All entry forms and payments must be received no later than midnight, August 6, 2025.
 - **Exceptions:** Digital Drawing Class 7214 and Poetry Class 7258. Submission deadline August 3. See Art & Handicrafts Department for details.
- Entry fees can be paid as follows:
 - during online registration,
 - by **e-transfer** to fair@millarvilleracetrack.com, or
 - by cheque, cash, credit, or debit payment through the MRAS office.
 - No entry fees can be refunded.

JUDGING

- Read the information for **all exhibitors** and **department specific rules** carefully. Any entry that does not comply may be disqualified for judging.
- Various judging guidelines are used by the Fair and are listed on the [MRAS website](https://www.mras.ca/) under Judging Information.
- The Judges shall act with impartiality and in compliance with judging standards set by Department Managers, or standards set out for sanctioned shows as detailed in each relevant department.
- The Fair Committee and Judges are bound by the rules of the Fair.
- The Department Manager and/or the Judge has the authority to move an exhibit between classes if they deem it to be in the incorrect class.
- Judges will award 1st, 2nd, and 3rd place ribbons in all classes, if possible, according to the number of entries submitted.
- Concerns regarding judging results can be submitted by email to fair@millarvilleracetrack.com, Attention: Fair Chairperson.

PRIZES

- Each class, unless otherwise noted in the rules for each department section, has a cash prize payout for 1st, 2nd, and 3rd place as determined by the judges. The amount paid is noted with each department.
- In addition to the class cash prize, some departments offer special cash and/or merchandise prizes as detailed in each department section of the Fair Book.
- Prize money will be paid in early September via e-transfer or cheque. The Fair will gratefully accept any winnings as a donation to the Fair.
- Be open minded. You can't always win, but great satisfaction is derived from showing your work, skill, or livestock.

QUICK REFERENCE GUIDE

FOR BENCH EXHIBITORS

Bench Departments include Arts & Handicrafts, Fibre Arts, Field Crops, Flowers, Home Cooking & Baking, Licked Salt Block, Photography, Vegetables & Fruit, Woodworking

- All exhibits must be the bona fide property of the exhibitor for at least 30 days prior to the Fair.
- Each exhibit must have a tag that identifies the exhibitor and the class being entered.
- **Exhibit tags can be picked up in the Arena** on Thursday, August 14 between 5:00 p.m. and 8:00 p.m. and Friday, August 15 between 12:00 p.m. and 5:00 p.m.
- Exhibitors are responsible for attaching the tag to the exhibit and dropping both off at the appropriate location in the Arena.
- Blank tags may be purchased for the Flowers and Vegetable & Fruit Departments ONLY. When dropping off your exhibit, replace the blank tag class number with the actual class being entered. Blank tags can be used for any class within these Departments.
- **Judging starts at 5:30 p.m. on Friday August 15.**
- Entries must stay in the Arena until 4:00 p.m. Sunday August 17.
- Fair volunteers are not responsible for damage to, or theft of, the exhibits.
- The sale of exhibits is not allowed on the fairgrounds unless exceptions are specified in the class description.
- The Fair Department Managers are not responsible for any articles left on the fairgrounds or in facilities after 5:00 p.m. on Fair Sunday.

FOR LIVESTOCK EXHIBITORS

Livestock Departments include Beef Cattle, Dairy Goats, Rabbits, Sheep, and Poultry, Waterfowl & Pigeons

- No animal suffering from a contagious or infectious disease will be allowed on the MRAS grounds.
- The Fair has adopted a [Livestock Animal Care Code of Conduct](#). Livestock exhibitors must acknowledge that they have read and agree to abide with this code when registering.
- **MRAS Premise Identification Number: AA03CPY8Q**
- The sale of livestock exhibits is not allowed on the fairgrounds unless exceptions are specified in the class description.
- All livestock must be in place and transport vehicles parked by 8:00 a.m. on show day. Animals must stay in place until 4:00 p.m. on show day.
- Sheep will be displayed and judged on Saturday, August 16 in Barn A.
- Dairy Goats will be displayed and judged on Sunday, August 17 in Barn A.
- Beef Cattle will be displayed and judged on Sunday, August 17 in the Rodeo Infield.
- Rabbits will be shown and judged throughout the days of August 16 & 17 in Barn C. For more information refer to the Rabbit section of the Fair Book.
- Poultry, Waterfowl, & Pigeons will be displayed and judged in the Quonset. Tags will be affixed to the cages in judging order. Please place your bird in the appropriate cage by 8:00 a.m. Fair Saturday. Judging begins at 10:00 a.m. Fair Saturday.
- Exhibitor number tags for Beef Cattle, Rabbits, and Sheep will be available for pickup in the show areas starting at 8:00 a.m. day of show.

FOR HORSE EXHIBITORS

Horse Departments include English Horse, Gymkhana, Horse Costume, and Western Horse

- Trailer parking is in the infield as shown on the map in the back of the Fair Book.
- Competitor numbers are available for pickup ringside on show day.
- Animals suffering from a contagious or infectious disease will NOT be allowed on the MRAS grounds.
- The Fair has adopted an [Equine Animal Care Code of Conduct](#). Horse exhibitors must acknowledge that they have read and have agreed to abide by this code. All riders must have agreed to the terms of the Code of Conduct and the Waivers prior to entering the show ring.
- **Gymkhana starts at 1:00pm in the Rodeo Infield on Friday, August 15.**
- English Light Horse Flat Classes start at 8:00 a.m. and Jumping Classes start at noon on Saturday, August 16.
- Horse Costume Competition is at 12:00 p.m. on Saturday, August 16.
- Western Horse shows start at 8:00 a.m. on Sunday, August 17.
- During the Fair - horses are only allowed in the infield and designated warm up areas.

FAIR ATTRACTIONS

ALBERTA BIRDS OF PREY

See, touch, and hold the rescued owls and eagles rehabilitated by the Birds of Prey Foundation. Learn about the work to rehabilitate injured raptors for release back into the wild. **LIVE BIRDS WILL BE ON SITE!**

ANTIQUE AUTO, TRUCK, & ENGINE SHOW

DEPARTMENT MANAGER: Todd Watkins | 403.860.8184

Dust off your antique vehicles and bring them to the Fair on either or both Fair days. Learn all about the engines that powered farm equipment at the Stationary Engine Display. Working displays include equipment from 1900 - 1950. Find us at the north end of the grounds near the tractor pull.

Check out the car show hosted by Ford Model A & T clubs! See meticulously restored automobiles from 1910 -1930. They will be located along the Racetrack Fence on Fair Saturday.

DISCOVERY CARD

Pick up your Discovery card at the Gate or the Information Booth. Look for the red bandanas, collect your stamps and discover the Fair.

Hand in your completed card at the Information Booth to receive your participation ribbon and to enter the draw. Prizes for the draw have been provided by the following organisations: Bow Habitat, Calaway Park, Okotoks Recreation

THE FARMYARD

Visit the farm animals - goats, chickens, cows, horses, sheep, llamas, miniature horses - up close and personal. Talk to the farmers, ask all your questions, and learn about Canadian Agriculture!

For more country fun, the Chinook Llama and Alpaca Club will be demonstrating how to use fleece to felt. While in the Farmyard, participate in the ultimate test at the **Poop and Animal Track Identification Station**. The Poop Identification Station is brought to you by the Alberta Institute for Wildlife Conservation.



FAIR RAFFLE

Check out the Fair Raffle <https://www.rafflebox.ca/raffle/millarvilleracing> on Raffle Box! This is a fun way to support the Fair and possibly earn some cash yourself. OPEN from April 2, 2025 to September 2, 2025. As a not-for-profit community run and funded event, your support of the Fair through our 50/50 means the world to us!



FLEECE TO SHAWL DEMONSTRATION

Sheep Creek Weavers will be hosting activities in their big tent by the Hall. On Saturday from 9:00 a.m. to 3:00 p.m. there will be a "Sheep to Shawl" Competition. Alberta Fibre Arts teams including a weaver, fibre preppers, and spinners, will race to complete a hand-woven shawl started from raw fibre. The shawl completed by the Sheep Creek Weavers team will be sold through silent auction at the Sheep Creek Weavers annual sale on October 18th & 19th, 2025.

Come back on Fair Sunday to try some of our "Make & Take" projects, including felting landscapes and beads, Kumihimo, tube knitting, and weaving.

MILLARVILLE FARMERS' MARKET

The Farmers' Market is a vibrant showcase of local artisans, from vegetable and fruit farm producers to beekeepers, and the best baked goods. A plethora of products and ideas for your home, garden, dog, or yourself. Experience the fabulous food from our local Food Trucks or taste test our locally brewed beer and cider.

SATURDAY and SUNDAY with extended hours of **9:00 a.m. to 4:00 p.m.**

Ask our vendors about their farm, their art, their love of what they do. Celebrate knowing your farmer, baker, and candlestick maker!

PIE & QUILT AUCTION

Follow the "Pie Piper" to the Stage on Fair Saturday and bid on an award-winning pie or locally crafted, one-of-a-kind quilts in a Live Auction. Proceeds from the Auction support the Fair! This, in turn, helps support the Millarville Racing & Agricultural Society, which supports these great facilities for our community.

Pies are provided by **Exhibitors** entering pies into Home Cooking & Baking **class 5076**.

Quilts are provided by **Donna Kendall** and the **Country Lane Quilters Guild**.

STOCK DOGS IN ACTION

Check out the intelligence, agility, and precision of these talented stock dogs as they showcase their herding skills to manage livestock.

THE PM RANCH

Mosey over to the ranch to show off your roping skills, put the stick horses through their paces in the barrels, or pose for a photo. Great fun for kids of all ages.



COMPETITIONS

0050 ANTIQUE TRACTOR PULL & SHOW

DEPARTMENT MANAGER: Doug Martin | 403.875.5557

2025 DEPARTMENT DONOR: Hulleman Farms

**Entry Fee: \$20 per person for first tractor pull. Additional tractors pulled \$5 each.
Free to show an antique tractor.**

Ribbons are awarded for 1st, 2nd, and 3rd in each class.

Plaques are awarded for:

1960 & Older Tractor Pull
1940 & Older Tractor Pull
Best Overall Tractor Pull
Best Restored Tractor
Best Original Tractor

Tractor Pull Sled supplied and operated by Harris & Mark Gardiner
Plaques sponsored by Jeff and Jesse Moen
Sound stage supplied by ATCO

Use the Competition entry form at the back of this book
or register online at <https://www.assistexpo.ca/priddis-millarville-fair>

DIVISION 0050 - TRACTOR PULL CLASSES – FOR TRACTORS FROM 1960 OR OLDER

CLASS	CLASS DESCRIPTION
0050	Bantam Weight 2000 to 3999
0051	Class 1 Weight 4000 to 4999
0052	Class 2 Weight 5000 to 5999
0053	Class 3 Weight 6000 to 6999
0054	Class 4 Weight 7000 to 8499
0055	Class 5 Weight 8500 to 9999
0056	Class 6 Weight 10000 to 12000

SCHEDULE OF EVENTS:

Drivers Meeting: 10:00 a.m. Saturday
First Pull: 10:30 a.m. Saturday
Second Pull: 1:00 p.m. Saturday
Fun Pull: 10:00 a.m. to 2 p.m. Sunday



Photo Courtesy of Gervais Goodman

COMPETITIONS

FARM STRONG GAMES

DEPARTMENT MANAGER: Darryl Evans | bd_evans@telus.net, Cotton Anderson | cottonanderson3@gmail.com

You don't have to be a farmer to participate in these events. The games are set for Sunday, August 17. Pre-registration opens on Fair Sunday morning, 1 hour before the games begin. Check the Fair weekend schedule for times and locations.

BALE TOSS

No entry fee.

Prize Payouts: 1st \$50, 2nd \$25, 3rd \$10, Ribbons for 1st, 2nd, 3rd

Class 1 Hay Bale Toss (approximately 60 pounds)

Class 2 Straw Bale Toss (approximately 20 pounds)

RULES

1. Contest open to everyone 15 years and older.
2. Waiver required.
3. Class 1 - Hay - person over 180 pounds
4. Class 2 - Straw - person under 180 pounds
5. Class 2 participant **can** move to Class 1
6. Class 1 participant **cannot** move to class 2
7. Bar is set at 5 feet to start the contest.
8. Each participant will get 2 attempts at successfully tossing the hay bale over the bar without knocking it off.
9. Participants must stand behind a marked line when throwing the bales.
10. Only 1 line fault is allowed per throw height. A player with 2 line faults at the same height, will be disqualified.
11. Bar height will increase by 6-inch increments after each round.
12. Winner is determined by process of elimination.
13. In the event of a tie, then a sudden death tie-breaker will determine the winner.



FARM CHORE RELAY

No entry fee.

Prize Payouts: 1st \$50, 2nd \$25, 3rd \$10, Ribbons for 1st, 2nd, 3rd

RULES

1. Contest open to everyone 15 years and older.
2. Waiver required.
3. When all tasks are completed to the judge's satisfaction, the participant will be given their ribbon and prize money

Description of the Course:

1. Go to the starting line as directed by competition volunteers. Start when the signal is given.
2. Wheelbarrow through your assigned lane and pick up manure with the rake. Bring the manure back to the start and put it in the manure bucket.
3. Put 2 bales into the wheelbarrow and weave through the pylons and then back to the start line. Stack the hay bales neatly at the start line.
4. Go onto the stage and cleanly peel your designated bowl of assorted vegetables.
5. Stand up, throw your hands in the air and yell "Yee haw".

COMPETITIONS

0100

LICKED SALT BLOCK COMPETITION (AKA "PASTURE ART")

DEPARTMENT MANAGERS: Barb Parker | purpleparker212@gmail.com, Donna Kendall | donnaorlloyd@gmail.com

Entry Fee: \$5 per class | Prize Payouts: 1st \$15, 2nd \$10, 3rd \$5

Use the Competition entry form at the back of this book or register online at <https://www.assistexpo.ca/priddis-millarville-fair>

This competition provides an opportunity for animal caretakers to showcase the artistic endeavours of their critters: cattle, sheep, goats, horses, and other four-legged creatures requiring the nutritional supplements of salt/mineral blocks. As the caretakers travel throughout their pastures, this comment is often heard "Hey, did you get a look at that salt block?" Hence, the creation of "pasture art". Judging criteria are based on the two words: "pasture" and "art".

SPECIAL AWARD:

People's Choice Rosette & a \$25 cash prize donated by **Barb Parker** awarded to the Best Overall Exhibit in the Competition. The highest number of votes, chosen by the people, wins.

RULES:

1. All entries must be salt blocks licked by cows or other livestock. Wild critter (deer, elk, moose etc.) assistance is permitted and/or encouraged.
2. Human enhancement may result in massive loss of credibility.
3. Entries must be presented in "pasture" condition as judges look for this evidence.
4. Entries will be displayed in the Arena with the Bench Exhibits. Bench exhibitor guidelines apply.

DIVISION 100 - LICKED SALT BLOCK

CLASS	CLASS DESCRIPTION
-------	-------------------

0101	Most Artistically Licked
------	--------------------------



0150

HONEY COMPETITION

DEPARTMENT MANAGER: Betty Foran | bforan50@telus.net

Entry Fee: \$5 | Prize Payouts: 1st \$20, 2nd \$15, 3rd \$10

Use the Competition entry form at the back of this book or enter online at <https://www.assistexpo.ca/priddis-millarville-fair>

Go to the Fair Website for tips on exhibiting in the Honey Competition and the scorecard.

SPECIAL AWARDS:

Rosette awarded to the Best Overall Exhibit in the Competition. Ribbons for 1st, 2nd, 3rd in each class.

RULES:

1. Limit of 2 Entries per class
2. Entries free from labelling, identifying or decorative features

DIVISION 150 - HONEY COMPETITION

CLASS	CLASS DESCRIPTION
-------	-------------------

0151	Liquid Light-Colored Honey, 1- 375 mL Glass Jar
0152	Liquid Amber-Colored Honey, 1- 375mL Glass Jar
0153	Creamed Honey, 1- 375mL Glass Jar
0154	Taster's Choice, 1- 375mL Glass Jar

COMPETITIONS

0065

HORSE COSTUME COMPETITION

DEPARTMENT MANAGER: Sylvia Checkley | epi4animalhealth@gmail.com

Entry Fee: \$5 per class | Prize Payouts: 1st \$20, 2nd \$15, 3rd \$10, 4th - 6th \$5

Use the Competition entry form at the back of this book or register online at <https://www.assistexpo.ca/priddis-millarville-fair>

RULES:

1. The competition will run during the lunch break for English Horse on Fair Saturday. Start time is 12:00pm, in the Rodeo Infield.
2. Horses may be led by an adult.

DIVISION 65 - HORSE COSTUME COMPETITION

CLASS	CLASS DESCRIPTION
0066	Children Ages 7 Years & Under
0067	Children Ages 8 to 12 Years
0068	Children Ages 13 to 17 years



0110

ROOSTER CROWING COMPETITION

Can your rooster out-crow any other rooster? Let's find out!

Distinguished Judge – Bill Jackson

Entry Fee - \$5 | Prize Payouts: \$2 per crow per rooster

Use the Competition entry form at the back of this book or register online at <https://www.assistexpo.ca/priddis-millarville-fair>

SPECIAL AWARD:

Name of 1st place winner engraved on the World Champion Rooster Crowing trophy, donated by Bill Jackson

RULES:

1. Competition will run on Saturday and Sunday at 9:30 a.m. on the Stage.
2. Birds must be in the crowing competition cages by 9:20 a.m. Handlers are to remain with their birds for the entirety of the competition.
3. Competition is timed and each crow during the time interval allowed will be awarded \$2. All cash awards will be given to the rooster's handler at the conclusion of the competition.

DIVISION 110 - ROOSTER CROWING COMPETITION

CLASS	CLASS DESCRIPTION
0111	Rooster Crowing Saturday
0112	Rooster Crowing Sunday



COMPETITIONS

PIE EATING COMPETITION

Entry Fee: \$5 per team of 3 people (Eater, Feeder, Director) | Prize Payouts: 1st \$45, 2nd \$30, 3rd \$15 per team

Pre-registration is not required.

RULES:

1. Registration opens 30 minutes before the competition begins. Check the daily Fair schedule for time and location of competition. Number of teams is determined by the number of pies available, so be quick.
2. Eaters and Feeders are blindfolded. The Eaters must keep their hands behind their backs. The Feeder uses a spoon to deliver the pie to the Eater.
3. The Director is not blindfolded and directs the Feeder.
4. No hand feeding, the Feeder must use the spoon provided.
5. No throwing pie on the ground.
6. The competition is over when the first, second, and third pie plates are empty.
7. No age limits!



WATERMELON EATING COMPETITION

Entry Fee: \$5 per team of 2 people (Eater, Feeder) | Prize Payouts: 1st \$30, 2nd \$20, 3rd \$10 per team

Pre-registration is not required.

RULES:

1. Registration opens 30 minutes before the competition begins. Check the daily Fair schedule for time and location of competition. Number of teams is determined by the number of watermelons available, so be quick.
2. The Eaters must keep their hands behind their backs. The Feeder holds the watermelon for the Eater.
3. No spitting watermelon on the ground.
4. The competition is over when the first, second, and third watermelons are eaten to the rind.
5. No age limits!



DEPARTMENTS, DIVISIONS & CLASS LISTS

0600

WESTERN LIGHT HORSE

DEPARTMENT MANAGERS: Marian Anton | marian.anton54@gmail.com, Kayla Friesen | kayla.friesen22@gmail.com, Nancy Simmons | prisim@telus.net

Entry Fee: \$10 per class | Lead Line Classes Only \$5 per class | Prize Payouts: Sliding scale based on the number of entries per class to a maximum of 1st \$40, 2nd \$20, 3rd \$10

Ribbons & Prize Pack Only (no prize money) for Lead Line classes. Ribbons up to 6th place.

SPECIAL AWARD:

A single prize will be awarded to the overall winner of the Jack Benny classes (0605, 0617, 0618) donated by **Brasso Nissan in memory of Einar & Donna (Thomson) Brasso**

Use the Light Horse entry form at the back of this book or register online at <https://www.assistexpo.ca/priddis-millarville-fair> Include the name of the horse for each entry.

RULES

1. Start time: 8:00 a.m. sharp at the Sand Ring on Fair Sunday. Maximum of 15 entries per class.
2. Packages with competitor numbers & classes can be picked up on Sunday morning at ringside.
3. Appropriate Western attire and tack must be worn in all classes.
4. Helmets are encouraged for all participants under 18 years of age.
5. Three minutes will be allowed between classes after which the gate will be closed.
6. Age groups, unless otherwise stated, are: Junior - 6 to 12 Years | Intermediate - 13 to 17 Years | Senior - 18 to 39 Years | Jack Benny - 40 Years & Over

"Just Do It" Classes - These classes are for those who have been out of the show ring for a while or never entered before, always wanted to try it, or just want to experience something new with their horses. Classes are open to riders of all ages. This series is all about the experience and 'lessons learned best by trying it first-hand' - no pressure, all positive.

DIVISION 0600 - WESTERN FLAT CLASSES

CLASS	CLASS DESCRIPTION		
0601	Showmanship - Just Do It	0613	Pleasure - Intermediate
0602	Showmanship - Junior	0614	Horsemanship - Intermediate
0603	Showmanship - Intermediate	0615	Pleasure - Senior
0604	Showmanship - Senior	0616	Horsemanship - Senior
0605	Showmanship - Jack Benny	0617	Pleasure - Jack Benny
0606	Lead Line - Ages 5 & Under	0618	Horsemanship - Jack Benny
0607	Lead Line - Ages 5 & Under - Red Light/Green Light	0619	Horsemanship - "Just Do It" - All Gaits
0608	Lead Line - Ages 5 & Under - Simon Says	0620	Working Ranch Western Pleasure - Ages 17 Years & Under
0609	Pleasure - Walk/Trot Only - All Ages	0621	Working Ranch Western Pleasure - Ages 18 Years & Over
0610	Horsemanship - Walk/Trot - All Ages	0622	Open Command - Ages 17 & Under
0611	Pleasure - Junior	0623	Open Command - Ages 18 Years & Over
0612	Horsemanship - Junior	0624	Open Pairs (both riders pay)

DIVISION 0630 - WESTERN TRAIL CLASSES

CLASS	CLASS DESCRIPTION
0631	Trail - Ages 17 Years & Under
0632	Trail - Ages 18 Years & Over

DEPARTMENTS, DIVISIONS & CLASS LISTS

0650

LIGHT HORSE GYMKHANA

DEPARTMENT MANAGER: Sylvia Checkley | epi4animalhealth@gmail.com

Entry Fee: \$10 per class | \$5 per Lead Line and Fun class | Prize Payouts: Sliding scale based on the number of entries per class to a maximum of 1st \$40, 2nd \$20, 3rd \$10

Ribbons up to 6th place. Ribbons Only (no prize money) for Lead Line and Fun Event classes.

Use the Light Horse entry form at the back of this book or register online at

<https://www.assistexpo.ca/priddis-millarville-fair> Include the name of the horse for each entry.

Start time: 1:00 p.m. sharp in the Rodeo Infield on **Fair FRIDAY AUGUST 15th.**

SPECIAL AWARDS:

Class 653 Barrel Racing Intermediate - \$50 cash prize to 1st place winner donated by **Linda Schaal in memory of Garry, Walter & Lil Schaal**

Class 657 Pole Bending Intermediate - \$50 cash prize to 1st place winner donated by **Linda Schaal in memory of Garry, Walter & Lil Schaal**

RULES

1. One rider per horse except for Pee Wee and Lead Line classes, where shared horses are allowed.
2. Packages with competitor numbers & classes can be collected at ringside starting at 12:30 p.m.
3. Appropriate attire and tack must be worn in all classes.
4. Helmets are encouraged for all participants and mandatory for anyone under 18 years of age (Lead Line, Pee Wee, Junior and Intermediate classes).
5. The gate will NOT be held for late competitors. Competitors who miss their run will be given a "no time".
6. Age groups unless otherwise stated are: Lead Line - 5 Years & Under | Pee Wee - 6 to 8 Years | Junior - 9 to 12 Years | Intermediate - 13 to 17 Years | Senior - 18 Years & Over

DIVISION 0640 – FUN EVENTS - LEAD LINE

CLASS	CLASS DESCRIPTION
-------	-------------------

0641	Barrel Racing - Lead Line
0642	Pole Bending - Lead Line
0643	Egg Race - Lead Line

DIVISION 0650 – GYMKHANA & GAMES

CLASS	CLASS DESCRIPTION
-------	-------------------

0651	Barrel Racing - Pee Wee	0657	Pole Bending - Intermediate
0652	Barrel Racing - Junior	0658	Pole Bending - Senior
0653	Barrel Racing - Intermediate	0659	Thread the Needle - PeeWee
0654	Barrel Racing - Senior	0660	Thread the Needle - Junior
0655	Pole Bending - Pee Wee	0661	Thread the Needle - Intermediate
0656	Pole Bending - Junior	0662	Thread the Needle - Senior

DIVISION 0670 – FUN EVENTS

CLASS	CLASS DESCRIPTION
-------	-------------------

0671	Egg Race - Pee Wee and Junior	0674	Tooney Race - Pee Wee and Junior
0672	Egg Race - Intermediate and Senior	0675	Tooney Race - All Ages - Intermediate and Senior
0673	Delsey Derby - All Ages		

ENGLISH LIGHT HORSE

DEPARTMENT MANAGER: Nancy Seaman | nseaman002@gmail.com

Entry Fee: \$10 per class | \$5 per Lead Line and Fun class

Prize Payouts: Sliding scale based on the number of entries per class to a maximum of 1st \$40, 2nd \$20, 3rd \$10

Ribbons up to 6th place. Ribbons Only (no prize money) for Lead Line and fun classes.

Use the Light Horse entry form at the back of this book or register online at <https://www.assistexpo.ca/priddis-millarville-fair>. Include the name of the horse for each entry.

Start time **Flat Classes:** 8:00 a.m. sharp in the Rodeo Infield on Saturday

Start time **Jumping Classes:** Approximately noon in the Sand Ring on Saturday

RULES:

1. Only one rider per horse.
2. Packages with competitor numbers & classes can be collected on Saturday morning at the registration desk, north end of the Sand Ring.
3. Appropriate English equipment, tack, and attire shall be used in all events. All competitors must wear a properly fitted, approved helmet with safety strap permanently affixed to the helmet, and boots with heels.
4. Riders may ride in a higher age group but not lower and must be consistent throughout the day.
5. Competitors may enter a maximum of three consecutive height divisions for over-fence classes.
6. **Classes with less than four entries may be cancelled OR combined. This will be addressed to participants at the registration desk or, if possible, via email prior to Fair weekend.**
7. Jumping classes will be one round.
8. No Stallions allowed.
9. Riders, not at ringside when called for their class, will forfeit that ride.

NOTES:

- Equitation over fences: Judged on how riders are positioned and how effective they are in using their aids when completing a course over fences.
- Match the clock (optimum time): Competitors with equal jumping faults will be placed according to how close their time is to the optimum time, based on the course being ridden at the posted speed.
- Gamblers Choice: Obstacles on the course have different point values. Time is fixed. Competitors can jump any obstacle in any order/direction. After the time has elapsed, competitors can "gamble" and attempt the "joker" { +200 if clear, -200 if refused or knocked down.} High score wins.
- **NEW** Fun classes:
 - Delsey Derby – All Ages: elimination happens only when partners drop or break the toilet paper at any time after the start of the class.
 - Ride and Run – Two people must register for this timed event. The runner will run through the course and once completed, the rider will follow the same course. Trade your riding boots for sneakers if you decide to be the runner!
 - Kool-Aid Class – All Ages: riders will jump a short course holding a cup of "Kool-Aid" (water). Who can keep the most liquid?

DEPARTMENTS, DIVISIONS & CLASS LISTS

0800

DIVISION 0800 – ENGLISH FLAT CLASSES

CLASS	CLASS DESCRIPTION		
0801	Halter - All ages	0808	Fun Class - Delsey Derby - Over 10 Years
0802	Lead Line Equitation - Under 9 years	0809	English Pleasure Junior - Under 9 Years
0803	Equitation - Junior Under 9	0810	English Pleasure - Youth Ages 10 to 14
0804	Equitation Youth - Ages 10 to 14	0811	English Pleasure - Youth Ages 15 to 18
0805	Equitation Intermediate - Ages 15 to 18	0812	English Pleasure Senior - Over 18
0806	Equitation Senior - Over 18	0813	Pairs - Flat Class (both riders pay)
0807	Fun Class - Delsey Derby - Ages 9 Years & Under		

DIVISION 0820 – ENGLISH JUMPING CLASSES

CLASS	CLASS DESCRIPTION
0820	Trot Pole Equitation - Ages 9 Years & Under
0821	Trot Pole Equitation - 10 to 18
0822	Trot Pole Equitation - Over 18
0823	Hunter - X Rail
0824	Equitation Over Fences - X Rail
0825	Hunter - 2 Feet
0826	Equitation Over Fences - 2 Feet
0827	Pairs - Equitation (2 feet) Over Fences
0828	Fun Class - Ride and Run (pairs team) - Age 9 & under
0829	Fun Class - Ride and Run (pairs team) - Ages 10 to 14
0830	Fun Class - Ride and Run (pairs team) - Ages 15 to 18
0831	Fun Class - Ride and Run (pairs team) - over 18
0832	Match the Clock - 2' 3"
0833	Match the Clock 2' 6"
0834	Match the Clock 2' 9"
0835	Match the Clock 3 Feet
0836	Gambler's Choice - 2'3" to Maximum of 3 Feet
0837	Fun Class - Kool Aid Class - Ages 9 and under
0838	Fun Class - Kool Aid Class - 10 to 14
0839	Fun Class - Kool Aid Class - 15 to 18
0840	Fun Class - Kool Aid Class - over 18



DEPARTMENTS, DIVISIONS & CLASS LISTS

7200

ARTS & HANDICRAFTS

DEPARTMENT MANAGERS: Cathie Dallas | cathiedallas@gmail.com, Saskia Knol | saskiakh@gmail.com

2025 DEPARTMENT SPONSOR: Yvonne Sterrenberg

2024 AWARD OF EXCELLENCE WINNER: Sophia De Paoli

Entry Fee: \$2 | Prize Payouts: 1st \$10, 2nd \$6, 3rd \$4

Use the Bench entry form at the back of this book or enter online at <https://www.assistexpo.ca/priddis-millarville-fair>

SPECIAL AWARDS:

Award of Excellence Winner receives a Rosette and their name engraved on the perpetual department trophy

Best of Division Painting & Drawing - Rosette & \$100 cash prize from **Sheep Creek Arts Council** - Dalt Hinman Award, plus a \$50 gift card for the **Leighton Art Centre**

Best of Division Handicraft - Rosette & \$100 cash prize from **Sheep Creek Arts Council** - June Danforth Award, plus a \$50 gift card for the **Leighton Art Centre**

Class 7202 Painting - Oil or Acrylic - Birds or Animals - \$50 gift certificate from **Kensington Art Supplies** for 1st place winner

Class 7206 Painting - Watercolour - Any subject - \$50 gift certificate from **Kensington Art Supplies** for 1st place winner

Class 7209 Painting - Plein Air - Any subject - \$60 gift certificate from **Swinton's Art Supplies** for 1st place winner

Class 7211 Drawing - Ink - \$40 gift certificate from **Swinton's Art Supply** for the 1st place winner

Class 7213 - Abstract - Painting & Drawing - \$50 gift certificate from **Inglewood Art Supply** for the 1st place winner

Classes 7254 to 7257 Ceramics - \$75 gift certificate to overall winner in Thrownware and \$75 gift certificate to overall winner in Handbuild from **Ceramics Canada**

Class 7272 Recycled/Upcycled Handicraft - \$50 gift certificate from **Foothills Salvage and Recycling Society**

RULES

1. **LIMIT OF TWO ENTRIES** per class per exhibitor.
2. Exhibits must not have been shown at any previous Priddis & Millarville Fair and must be the original work of the exhibitor.
3. Exhibitor's name must not be visible on artwork (covering a signature with tape or paper is acceptable).
4. All entries in Painting & Drawing classes **7201-7220** must be framed or stretched and equipped to be hung with secure wire or a picture hanger as they will be displayed on peg board (except Digital Drawing class 7214).
5. Digital Drawing - **Class 7214: Deadline for the submission of registered entries is midnight on August 3rd.** Submit in Jpeg format to cathiedallas@gmail.com
6. Poetry **Class 7258: Deadline for the submission of registered entries is midnight on August 3rd.** Submit in Word or PDF format to cathiedallas@gmail.com
7. Ages 17 and under are recommended to submit entries to Junior Arts and Handicrafts.

DIVISION 7200 – PAINTING & DRAWING

CLASS	CLASS DESCRIPTION		
7201	Painting - Oil or Acrylic - Still life or flowers	7208	Painting - Scratch board - Any subject
7202	Painting - Oil or Acrylic - Birds or animals	7209	Painting - Plein Air - Any media
7203	Painting - Oil or Acrylic - Architecture or vehicles	7210	Painting - Chalk or Pastel
7204	Painting - Oil or Acrylic - Portrait or figure	7211	Drawing - Ink
7205	Painting - Oil or Acrylic - Landscape	7212	Drawing - Pencil, charcoal or graphite
7206	Painting - Watercolor - Any subject	7213	Abstract - Painting or Drawing
7207	Painting on Rock, Glass or Wood		

DEPARTMENTS, DIVISIONS & CLASS LISTS

DIVISION 7200 – PAINTING & DRAWING (continued)

CLASS	CLASS DESCRIPTION
7214	Digital Drawing - Any Subject. Entry deadline is midnight on August 3rd. Submit in Jpeg format to cathiedallas@gmail
7215	Fair Theme - Country Fun for Everyone - Painting or drawing
7216	Humorous Painting (any medium) OR Drawing
7217	Miniature Painting - any medium (maximum dimension 6" x 6")
7218	Mixed Media
7219	Any Other Painting or Drawing
7220	Open Farm Days Theme - Water - Painting or Drawing NEW

DIVISION 7250 – HANDICRAFTS

CLASS	CLASS DESCRIPTION
7251	Basketry
7252	Beadwork/Quill - Traditional
7253	Beadwork - Contemporary
7254	Ceramics - Thrownware - Functional
7255	Ceramics - Thrownware - Sculptural
7256	Ceramics - Handbuild - Functional
7257	Ceramics - Handbuild - Sculptural
7258	Poetry - Theme: Country Fun for Everyone. Entry deadline is midnight on August 3rd. Submit in Word or PDF format to cathiedallas@gmail.com
7259	Decorative Arts - Traditional or Contemporary
7260	Fair Theme - Country Fun for Everyone - Handicraft Item
7261	Glass - Fusion
7262	Glass - Stained
7263	Leatherwork - Original Design
7264	Mosaic
7265	Metal Craft (including Jewelry)
7266	Papercraft - Handmade - cards, scrapbook, photo album, journal
7267	Papercraft - Computer Generated - cards, scrapbook, photo album, journal
7268	Papercraft - Other i.e. Origami, Kirigami
7269	Recycled or Upcycled Handicraft
7270	Seasonal Theme - Handicraft
7271	Steam Punk
7272	Whimsical Statue - Any Media eg. paverpol or paper mache
7273	Open Farm Days Theme - Water - in any handicraft medium NEW
7274	Any Other Handicraft Item



DEPARTMENTS, DIVISIONS & CLASS LISTS

7500

ARTS & HANDICRAFTS - JUNIOR

DEPARTMENT MANAGER: Nancy Thomson | Imaconductor42@gmail.com

2025 DEPARTMENT SPONSOR: Judi Powell in memory of Bill Powell

2024 AWARD OF EXCELLENCE WINNER: Jordynn Mills

Entry Fee: \$2 | Prize Payouts: 1st \$10, 2nd \$6, 3rd \$4

Use the Bench entry form at the back of this book or enter online at <https://www.assistexpo.ca/priddis-millarville-fair>

SPECIAL AWARDS:

Award of Excellence for the Best Exhibit in the Department - Rosette, \$25 Gift certificate from **Swinton's Art Supply**, a Leighton t-shirt with tie-dye dye and instructions donated by the **Leighton Art Centre**.

Best of Division - Rosette, gift bags provided by **Rediscover Play Nature Schools**, and a cash prize of \$100 from **Sheep Creek Arts Council** divided and awarded as follows:

Ages 4 & Under - \$5

5 Years Old, Ages 6 & 7, Ages 8 & 9, Ages 10 & 11 - \$10 for each division

Ages 12 to 14 - \$25

Ages 15 to 17 - one prize of \$30

Best of Division cash prize of \$75 from **Square Butte Ladies Group** divided and awarded as follows: \$10 for each division except Ages 15 to 17, where cash prize is \$15

Special mention prizes to be awarded by the Judges - jewelry making kits donated by **Chain Reaction Canada**

RULES

1. **LIMIT OF ONE ENTRY** per class per exhibitor.
2. Exhibits must not have been shown at any previous Priddis & Millarville Fair and must be the original work of the exhibitor.
3. Please mount entries on coloured paper or frame pictures so they can be displayed on a peg board. All framed art must be ready for hanging with a wire properly attached to the back. We may disqualify those framed works that are not finished with hanging wire or hooks on the back.
4. Exhibitor's name must not be visible on artwork.

DIVISION 7500 – AGES 4 YEARS & UNDER

CLASS	CLASS DESCRIPTION
-------	-------------------

7501	Drawing pencil or pencil crayon
------	---------------------------------

7502	Painting - Any medium
------	-----------------------

7503	Lego/mechano original - Not to exceed 50 cm in length, width or height (no kits)
------	--

7504	Mixed Media
------	-------------

7505	Rock Painting
------	---------------

7506	Piper Cleaner Creation
------	------------------------

7507	Popsicle Stick Creation
------	-------------------------

7508	Open Farm Days Theme - Water
------	------------------------------

7509	Any Other Article Not Listed
------	------------------------------



DEPARTMENTS, DIVISIONS & CLASS LISTS**DIVISION 7510 – 5 YEARS OLD**

CLASS	CLASS DESCRIPTION
-------	-------------------

7511	Drawing pencil or pencil crayon
7512	Painting - Any Medium
7513	Lego/mechano original - Not to exceed 50 cm in length, width or height
7514	Mixed Media
7515	Rock Painting
7516	Article made from clay
7517	Popsicle stick Creation
7518	Open Farm Days Theme - Water
7519	Any other article not listed

DIVISION 7525 – AGES 6 & 7 YEARS

CLASS	CLASS DESCRIPTION
-------	-------------------

7526	Drawing - any medium
7527	Painting - any medium
7528	Lego/mechano original - Not to exceed 50 cm in length, width or height
7529	Mixed Media
7530	Rock Painting
7531	Article made from clay
7532	Popsicle Stick Creation
7533	Open Farm Days Theme - Water
7534	Artistic Expression of the Fair Theme
7535	Any other article not listed

DIVISION 7550 – AGES 8 & 9 YEARS

CLASS	CLASS DESCRIPTION
-------	-------------------

7551	Drawing - Any Medium
7552	Painting - Any Medium
7553	Lego/mechano original - Not to exceed 50 cm in length, width or height
7554	Mixed Media
7555	Rock Painting
7556	Article made from clay
7557	Paper Craft
7558	Jewelry
7559	Shoebox Diorama
7560	Open Farms Days Theme - Water
7561	Artistic Expression of Fair Theme
7562	Any other article not listed



DEPARTMENTS, DIVISIONS & CLASS LISTS**DIVISION 7575 – AGES 10 & 11 YEARS****CLASS CLASS DESCRIPTION**

7576	Drawing - Any Medium
7577	Painting - Any Medium
7578	Lego/mechano original - Not to exceed 50 cm in length, width or height
7579	Mixed Media
7580	Rock Painting
7581	Sculpture
7582	Paper Craft
7583	Jewelry
7584	Shoebox Diorama
7585	Original Poem / song lyrics
7586	Original story (no more than 5 pages)
7587	Open Farm Days Theme - Water
7588	Artistic Expression of Fair Theme
7589	Any other article not listed

DIVISION 7600 – AGES 12 TO 14 YEARS**CLASS CLASS DESCRIPTION**

7601	Drawing - Any Medium
7602	Painting - Any Medium
7603	Lego/mechano original - Not to exceed 50 cm in length, width or height
7604	Mixed Media
7605	Rock Painting
7606	Sculpture
7607	Paper Craft
7608	Jewelry
7609	Shoebox Diorama
7610	Original Poem / song lyric
7611	Original story (no more than 5 pages)
7612	Open Farm Days Theme - Water
7613	Artistic Expression of Fair Theme
7614	Any other article not listed

DIVISION 7625 – AGES 15 TO 17 YEARS**CLASS CLASS DESCRIPTION**

7625	Drawing - Any Medium	7633	Shoebox Diorama
7626	Painting - Any Medium	7634	Original Poem / song lyrics
7627	Lego/mechano original - Not to exceed 50 50 cm in length, width or height	7635	Original story (no more than 5 pages)
7628	Mixed Media	7636	Artful Coloring Page
7629	Rock Painting	7637	Open Farm Days Theme - Water
7630	Sculpture	7638	Artistic Expression of Fair Theme
7631	Papercraft	7639	Any other article not listed
7632	Jewelry		

DEPARTMENTS, DIVISIONS & CLASS LISTS

6000

FIBRE ARTS

DEPARTMENT MANAGER: Sheila Virgo | sheilavirgo2@gmail.com

2025 DEPARTMENT DONORS - The Plane Girls - Donna Kendall & Riel Erickson

Entry Fee: \$2 | Prize Payouts: 1st \$10, 2nd \$6, 3rd \$4

Use the Fibre Arts entry form at the back of this book or enter online at <https://www.assistexpo.ca/priddis-millarville-fair>

Be sure to select skill level if not defined in class description. Identify in the class description if the entry was made from a kit.

SPECIAL AWARDS:

Award of Excellence for Best Exhibit in Class 6351 - Epic Project - \$100 donated by **Neal Campbell in memory of Mrs Elizabeth Campbell**

Best of Division Rosette awarded to Best Exhibit in each Division: Knitting | Crocheting | Embroidery | Sewing | Weaving | Spinning | Felting

Best of Division Quilting - Rosette & \$100 cash prize donated by **Sheep Creek Arts Council**

Division 6100 Embroidery - \$20, \$15 and \$10 gift certificates for 1st, 2nd and 3rd place winners in each class from **My Sewing Room**

Division 6150 Sewing - \$25 gift certificate for the 1st place winner of each class in Advanced skill level, and the intermediate skill level in class 6152, from **Rick Rack Textiles**

Division 6250 Quilting - classes 6258, 6260 - \$25 cash prize to 1st place winners in the advanced skill level from **Sheila Virgo**

Class 6254 - Applique Quilt - \$25 gift certificate for 1st place winner, Beginner skill level from **Rumpled Quilt Skins**

Class 6301 - Beginner Weaving - \$10 cash prize for 1st place winner donated by **Sheep Creek Weavers**

Class 6302- Intermediate Weaving - \$20 cash prize for 1st place winner donated by **Sheep Creek Weavers**

Class 6303 - Advanced Weaving - \$30 cash prize for 1st place winner donated by **Sheep Creek Weavers**

Class 6309 - Beginner Spinning - \$10 cash prize for 1st place winner donated by **Sheep Creek Weavers**

Class 6310 - Intermediate Weaving - \$20 cash prize for 1st place winner donated by **Sheep Creek Weavers**

Class 6311 - Advanced Spinning - \$30 cash prize for 1st place winner donated by **Sheep Creek Weavers**

RULES

1. **LIMIT OF TWO ENTRIES** per class per exhibitor.
2. All work exhibited must not have been shown at any previous Priddis & Millarville Fair and must be the work of the exhibitor.
3. Department Managers and Judges reserve the right to move exhibits between categories.
4. Exhibitor's skill level must be identified on the entry for any class that doesn't specify skill level.
5. Please include a description with your exhibit to help the Judges, e.g. state the type of fibre used in spinning, state the inspiration for any of the quilts.
6. Entries in the Division 6363 are for display only and will not be judged and are therefore exempt from any prize payout.
7. If your name is on your exhibit, please cover it so the judges do not see your name.

SKILL LEVELS

Note: An exhibitor may be a Beginner in one area and Advanced in another

Beginner – Anyone new to the skill and/or has entered a few times but has not ever won first place at the Fair.

Intermediate – Anyone with 5+ years of using the skill or has won first place Beginner level but not Intermediate at the Fair.

Advanced – Anyone with significant years practising the skill or has won first place at Intermediate level.

DIVISION 6000 – KNITTING

CLASS	CLASS DESCRIPTION
6001	Accessories: Hats, mitts, gloves, socks
6002	Wearable Garments - Infant to adult
6003	Shawls, Scarves, Stoles, and Cowl

DIVISION 6050 – CROCHETING

CLASS	CLASS DESCRIPTION
6051	Wearable Garments - Infant to Adult
6052	Toys
6053	Afghans, Wall Hangings and Others

DEPARTMENTS, DIVISIONS & CLASS LISTS**DIVISION 6100 – EMBROIDERY**

CLASS	CLASS DESCRIPTION		
6101	Hand Embroidery Beginner	6104	Machine Embroidery Beginner
6102	Hand Embroidery Intermediate	6105	Machine Embroidery Intermediate
6103	Hand Embroidery Advanced	6106	Machine Embroidery Advanced

DIVISION 6150 – SEWING

CLASS	CLASS DESCRIPTION
6151	Fabric Tote Bag or Purse
6152	Clothing - Child to Adult
6153	Home Decor, Placemats (At Least 2 Identical) & Table Runners

DIVISION 6250 – QUILTING (IF YOUR QUILT IS FOR CHARITY, LABEL AS SUCH AND/OR STATE INSPIRATION FOR THE QUILT)

CLASS	CLASS DESCRIPTION		
6251	Bed Quilt - Machine quilted	6257	Quilt by 2 or More People
6252	Bed Quilt - Longarm quilted	6258	Wall Hanging
6253	Bed Quilt - Commercially quilted	6259	Quilted Table Runner
6254	Applique Quilt	6260	Mixed Media Quilt or Art Quilt
6255	Baby or Lap Quilt	6261	Hand Quilted any Size (all skill levels judged together)
6256	Scrap Quilt	6262	Any Quilt Not Covered by the Above Classes (all skill levels judged together)

DIVISION 6300 – WEAVING, SPINNING, FELTING & DYEING (LIST TYPE OF FIBRE AND PROJECTED USE)

CLASS	CLASS DESCRIPTION		
6301	Weaving - Beginner	6308	Spinning - Novelty Yarn - State if done on spinning wheel or drop spindle
6302	Weaving - Intermediate	6309	Spinning - Beginner 20 Yard Skein - State if done on spinning wheel or drop spindle
6303	Weaving - Advanced	6310	Spinning - Intermediate 40 Yard Skein - State if done on spinning wheel or drop spindle
6304	Weaving - Original design	6311	Spinning - Advanced 60 Yard Skein - State if done on spinning wheel or drop spindle
6305	Weaving - SAORI	6312	Dyeing - Fabric only
6306	Felting - Wet felting	6313	Dyeing - Yarn or Roving
6307	Felting - Needle felting		

DIVISION 6350 – EPIC PROJECT

CLASS	CLASS DESCRIPTION
6351	Epic Project - This class is for the expert fibre artist or artists who want to take their skills to the highest level. Project can be in any Fibre Arts genre. It is classified as EPIC by its number of hours to complete or creative original design or accumulation of Fibre Arts techniques.

DIVISION 6360 – MISCELLANEOUS

CLASS	CLASS DESCRIPTION
6361	Embellishment to be judged on any type of fibre art - all skill levels judged together
6362	Any Fibre Art Project using or showing water to reflect the Open Farm Days Theme of Water
6363	Any Fibre Art Project - for display only, will not be judged. No prize money awarded.

FIBRE ARTS - JUNIOR

DEPARTMENT MANAGER: Sheila Virgo | sheilavirgo2@gmail.com

Entry Fee: \$2 | Prize Payouts: 1st \$10, 2nd \$6, 3rd \$4

Use the Fibre Arts entry form at the back of this book or enter online at <https://www.assistexpo.ca/priddis-millarville-fair>

SPECIAL AWARDS:

Best of Division Rosettes awarded to best exhibit in each Division: Ages 11 & Under | Ages 14 & Under | Ages 17 & Under
Classes 6502, 6513, 6523 - Sewing - \$20, \$15 and \$10 gift certificates for 1st, 2nd and 3rd place winners in each class

from **My Sewing Room**

Classes 6501, 6503 - 11 Years & Under - \$ 25 gift certificate for the 1st place winner from **Rumpled Quilt Skins**

Classes 6506, 6517, 6526 (project representing a favourite book) - \$15 for 1st & \$10 for 2nd **donated by The Design Group of Sheep Creek Weavers** in memory of **Janine Jones, master weaver, a librarian, & an advocate of children's literacy.**

RULES

1. All work exhibited must not have been shown at any previous Priddis & Millarville Fair and must be the work of the exhibitor.

DIVISION 6500 – AGES 11 YEARS & UNDER

CLASS	CLASS DESCRIPTION
6501	Knitting - Any article
6502	Sewing - Any article
6503	Felting - Any article
6504	Any Fibre Art Project Made by Junior Exhibitors with Help from an Adult. Specify how adult helped.
6505	Any Fibre Art Project Not Covered by Above Classes
6506	Any Fibre Art Project that Represents a Favorite Book. Provide a Picture or the Name of the Book

DIVISION 6510 – AGES 14 YEARS & UNDER

CLASS	CLASS DESCRIPTION
6511	Crochet - Any article
6512	Knitting - Any article
6513	Sewing - Any article
6514	Felting - Any article
6515	Any Fibre Art Project Made by Junior Exhibitors with Help from an Adult. Specify how adult helped.
6516	Any Fibre Art Project Not Covered by Above Classes
6517	Any Fibre Art Project that Represents a Favorite Book. Provide a Picture or the Name of the Book

DIVISION 6520 – AGES 17 YEARS & UNDER

CLASS	CLASS DESCRIPTION
6521	Crochet - Any article
6522	Knitting - Any article
6523	Sewing - Any article
6524	Felting - Any article
6525	Weaving - Any project
6526	Any Fibre Art Project that Represents a Favorite Book. Provide a Picture or the Name of the Book

FIELD CROPS

2025 DEPARTMENT DONORS - Ralph & Diane Onciul in memory of Doug Mackie

Entry Fee: \$2 per class | Prize Payouts: 1st \$10, 2nd \$6, 3rd \$4

Use the Bench entry form at the back of this book or enter online at <https://www.assistexpo.ca/priddis-millarville-fair>

SPECIAL AWARDS:

Award of Excellence Rosette for the Best Exhibit in the Department

Best of Division Rosette awarded to Best Exhibit in each Division

RULES

1. Exhibitors are encouraged to refer to the '[Judging & Exhibiting Standards Book](#) from the Alberta Department of Agriculture on the Fair website to download for your own referral.
2. Exhibitors may enter two entries in the same class if they are of different varieties. Please identify varieties.
3. All entries must be locally grown.

DIVISION 2000 – SHEAVES

Sheaves guidelines:

- The grain must be as mature as possible.
- Heads should be large and uniform with plump hard kernels.
- The sheaf should be free of weeds and other crop plants. It should contain only plants of the same variety, as indicated by the colour of straw and chaff, shape of head, presence or absence of awns, etc.
- Exhibitors of sheaves earn a major part of their reward from showmanship, which is the art of preparing a pleasing exhibit from carefully selected plants.
- The sheaf should conform to show standards, usually being about 6 to 8 cm (2 to 3 inches) diameter at the neck.

CLASS	CLASS DESCRIPTION		
2001	Sheaf of Wheat - Stripped of leaves	2005	Sheaf of Brome
2002	Sheaf of Oats - Stripped of leaves	2006	Sheaf of Any Other Tame Grass - Timothy, fescue, crested wheat grass etc, not mixed
2003	Sheaf of Barley - Stripped of leaves	2007	Sheaf of Alfalfa - Tied in 2 or 3 places
2004	Sheaf of Any Other Cereal or Oilseed Crop	2008	Sheaf of Other Forage Legumes - Sainfoin, red clover, flax etc, not mixed, tied in 2 or 3 places

DIVISION 2010 – CLEANED GRAIN

Cleaned Grain guidelines:

- Samples to be hand or machine cleaned.
- Can be from current or previous year's harvest.
- One litre sample required.
- Name the variety on the entry tag.

CLASS	CLASS DESCRIPTION		
2011	Seed Grain - Oats	2013	Seed Grain - Wheat
2012	Seed Grain - Barley	2014	Seed Grain - Any other - Canola, peas, flax, triticale, etc.

DEPARTMENTS, DIVISIONS & CLASS LISTS**DIVISION 2015 – HAY****Hay guidelines:**

- A 10 kg (20 lb) bale is necessary for a true evaluation.
- Place bale in a plastic bag, loose hay is acceptable.
- Current year production or previous year.

CLASS	CLASS DESCRIPTION		
2015	Tame Grass Hay	2017	Mixed Grasses & Legume Hay - Minimum 30% each
2016	Legume Hay	2018	Timothy Hay

DIVISION 2020 – GREEN FEED/SILAGE

CLASS	CLASS DESCRIPTION
2021	Green Feed - Cereal crop(s) from previous or current year crop
2022	Silage - Any kind from previous or current year crop - shown in 4 litre pail with lid

DIVISION 2025 – COLLECTION

CLASS	CLASS DESCRIPTION
2025	Collection of a Least 6 Tame Grasses and Legumes - suitable for quality hay, 25mm sheaves
2026	Display of Native Grasses - At least 6 varieties, 3 stems each, mounted and named
2027	Poisonous or Hazardous Weeds for Livestock - Collect and display at least 6 kinds in plastic bags. Please take precaution when handling.
2028	Arrangement of Grains, Grasses and/or Legumes for Decorative Purposes to Salute the Theme of the Fair - Country Fun for Everyone



DEPARTMENTS, DIVISIONS & CLASS LISTS

FIELD CROPS - JUNIOR

Entry Fee: \$2 per class | Prize Payouts: 1st \$10, 2nd \$6, 3rd \$4

Use the Bench entry form at the back of this book or enter online at <https://www.assistexpo.ca/priddis-millarville-fair>

SPECIAL AWARDS:

Award of Excellence Rosette awarded for the Best Exhibit in the Department

Best of Division Rosette awarded to Best Exhibit in each Division

RULES

1. Exhibitors are encouraged to refer to the '[Judging & Exhibiting Standards Book](#)' from the Alberta Department of Agriculture.
2. All sheaves must be labelled as to variety.

DIVISION 2500 – 6 YEARS & UNDER

CLASS	CLASS DESCRIPTION
2501	Mounted Grasses - Display and label, maximum of 6
2502	Mounted Cereals & Oilseed Crops - Display and label
2503	Mounted Legumes - Display and label
2504	Arrangement of Grains, Grasses and/or Legumes for Decorative Purposes to Salute the Theme of the Fair - Country Fun for Everyone
2505	Mini Sheaf of Either Wheat, Oats, Barley or Alfalfa or any Other Forage Legume - 6 stalks, do not need to be stripped of leaves
2506	How Many Garden Weeds Can you Collect - Identify and place in plastic bags on a board, try to include roots, stems, leaves and flowers. No poisonous weeds!
2507	First Time Entry Arrangement Using Grains, Grasses and Clovers

DIVISION 2510 – 11 YEARS & UNDER

CLASS	CLASS DESCRIPTION
2510	Mini Sheaf of Either Wheat, Oats, Barley or Alfalfa or any Other Forage Legume - 12 stalks, do not need to be stripped of leaves
2511	Mounted Grasses - Display and label, maximum of 12
2512	Mounted Cereals & Oilseed Crops - Display and label
2513	Mounted Legumes - Display and label
2514	Arrangement of Grains, Grasses and/or Legumes for Decorative Purposes to Salute the Theme of the Fair - Country Fun for Everyone
2515	Nuisance Weeds - Collect as many as you can and identify, press and mount in plastic bags on a board. Please include roots, stems, leaves and flowers. No poisonous weeds!
2516	First Time Entry Arrangement Using Grains, Grasses and Clovers

DIVISION 2515 – 17 YEARS & UNDER

CLASS	CLASS DESCRIPTION
2520	Mini Sheaf of Either Wheat, Oats, Barley or Alfalfa or any Other Forage Legume - 24 stalks
2521	Mounted Grasses - Display and label, maximum of 12
2522	Mounted Cereals & Oilseed Crops - Display and label
2523	Mounted Legumes - Display and label
2524	Arrangement of Grains, Grasses and/or Legumes for Decorative Purposes to Salute the Theme of the Fair - Country Fun for Everyone

DEPARTMENTS, DIVISIONS & CLASS LISTS

4000

FLOWERS

DEPARTMENT MANAGER: Lorraine Cathro | lcathro@platinum.ca

2025 DEPARTMENT DONOR: The Benediktson Family in memory of Audrey Benediktson

2024 AWARD OF EXCELLENCE WINNER: Alicja Brydges

Entry Fee: \$2 | Prize Payouts: 1st \$10, 2nd \$6, 3rd \$4

Use the Bench entry form at the back of this book or enter online at <https://www.assistexpo.ca/priddis-millarville-fair>

SPECIAL AWARDS:

Award of Excellence Rosette for the Best Exhibit in the Department and a \$100 gift card donated by "greengate Garden Centres"

Best of Division Rosette awarded to Best Exhibit in each Division: Potted Plant | Annuals | Summer Blooming Bulbs | Perennials | Dish Garden | Display

Classes 4056 & 4057 - Sweet Peas - name of 1st place winners engraved on the **Tom Davenport Memorial Trophy**, and a \$25 cash prize donated by the **Arkes Family in memory of Gwen Worden**

Class 4065 - Pansies with Faces - \$100 cash prize to 1st place winner, donated by **Harry Cowan in memory of Martha Cowan**

Class 4102 - Gladiolus - name of 1st place winner engraved on the **Murray Jackson Memorial Trophy**

Class 4252 - Arrangement for the theme 'Country Fun for Everyone' Fresh Flowers - name of 1st place winner engraved on the **Art & Theresa Patterson Memorial Trophy**

Class 4259 - Scarecrow Contest - \$100 gift card to 1st place winner donated by "greengate Garden Centers"

RULES

1. Exhibitors are encouraged to refer to [Judging and Exhibiting Standards for Horticultural Shows](#). These standards will be used by the Judges and include directions for quantities and display.
2. Entries which do not conform to specifications in the class description will not be judged.
3. Exhibitors may enter two exhibits in the same class if they are of different varieties. If entering a second variety, the name of the variety should be given for both entries.
4. All entries must be locally grown.
5. If you selected the class Blank Tag, you must complete all the information on the exhibit tag before submitting it for judging.
6. No restricted, noxious, or nuisance weeds. A list from the Alberta Weed Control Act is available at www.abinvasives.ca (Invasive Species/Plants) and from the Foothills County Agricultural Services Board.

GUIDELINES & TIPS

1. A bouquet is not an arrangement. You collect flowers in the hand and drop them into a vase - do not arrange them in a vase.
2. Gladioli & Dahlias are summer-blooming bulbs unless otherwise noted.
3. Submit the exact number of blooms when specified in the class to avoid disqualification.
4. Please name varieties if possible.
5. Condition of flowers is very important - they should be very fresh.
6. Six stems, means the stems are shown, not just the blossom, so that stems set off the blossoms.
7. When entering annual and perennial classes, choose uniform blooms.
8. Containers are judged in display classes only.

DIVISION 4000 – POTTED PLANTS

CLASS	CLASS DESCRIPTION
-------	-------------------

4001	Outdoor Planter
------	-----------------

4002	Any Flowering House Plant, must be in bloom
------	---

4003	Any Foliage House Plant
------	-------------------------

DEPARTMENTS, DIVISIONS & CLASS LISTS**DIVISION 4050 – ANNUALS****CLASS CLASS DESCRIPTION**

4051	Sunflower - Tallest stem, measured from soil line to base of flower	4059	Petunia - 3 Blooms, double
4052	Sunflowers - 3 Stems, one colour	4060	Nasturtium - 3 Stems
4053	Snapdragon - 3 Spikes, one colour	4061	Marigold - Under 4cm, one colour, 3 blooms
4054	Pansy - Over 5cm, 3 blooms, one variety	4062	Marigold - 4-8cm, one colour, 3 blooms
4055	Pansy - Under 5cm, 3 blooms, one variety	4063	Calendula - 3 Blooms
4056	Sweet Pea - 3 Spikes, one colour	4064	Any Other Annual - 3 Blooms
4057	Sweet Pea - 3 Spikes, assorted colours	4065	Pansies With Faces - 3 Blooms
4058	Petunia - 3 Blooms, single		

DIVISION 4100 – SUMMER BLOOMING BULBS**CLASS CLASS DESCRIPTION**

4101	Dahlia - One Bloom with first set of leaves showing
4102	Gladiolus - 1 Spike
4103	Any Other Flowering Bulb (e.g. Lily etc.)

DIVISION 4150 – PERENNIALS**CLASS CLASS DESCRIPTION**

4151	Arrangement of Roses, viewed from all sides	4153	Vase of Lilies - One or mixed colours
4152	Rose Bowl - 1 Bloom with foliage floating in bowl	4154	Any Other Perennials - 3 Stems, one variety

DIVISION 4200 – DISH GARDEN**CLASS CLASS DESCRIPTION**

4201	Dish Garden - Miniature landscape in an open container
-------------	--

DIVISION 4250 – DISPLAY**CLASS CLASS DESCRIPTION**

4251	Bouquet of Flowers, One Colour Predominating
4252	"Country Fun For Everyone" Theme Fresh Flowers Predominating
4253	Arrangement - Diminutive up to 8 cm in any direction, view from all sides
4254	Tea Cup & Saucer Arrangement (Tip: glue cup to saucer)
4255	Arrangement in an Unique Container
4256	Arrangement of Assorted Garden Flowers
4257	Arrangement of Foliage Only
4258	Collection of 3 blooms each of 5 different varieties of Annuals, within a Display
4259	Scarecrow Contest - Height 3' - 6', self-upright, able to withstand weather conditions

DIVISION 4300 – DISASTER RECLAMATION**CLASS CLASS DESCRIPTION**

4301	If there is an unexpected loss and/or damage to an entry in any class in the Department, you can move your creative salvage to this class. Include a written note to explain the loss that will be considered in the judging of the entry. No more than 2 entries per exhibitor in this class.
-------------	--

DEPARTMENTS, DIVISIONS & CLASS LISTS

4500

FLOWERS - JUNIOR

DEPARTMENT MANAGERS: Jill Dakers | GillianTDakers@gmail.com, Arlene O'Brien | ArleneOB@gmail.com

2025 DEPARTMENT DONOR: Scott Daniel Seaman Memorial Fund

2024 AWARD OF EXCELLENCE WINNER: Colbie Johnson

Entry Fee: \$2 per class | Prize Payouts: 1st \$10, 2nd \$6, 3rd \$4

Use the Bench entry form at the back of this book or enter online at <https://www.assistexpo.ca/priddis-millarville-fair>

SPECIAL AWARDS:

Award of Excellence Rosette for the Best Exhibit in the Department, a \$10 cash prize donated by **Shirley Goerlitz memory of Cecilia Taylor**, and a gift basket donated by **Patty Webb**

Best of Division Rosette awarded to Best Exhibit in each Division: Ages 6 & Under | Ages 11 & Under | Ages 17 & Under
Class 4707 - Arrangement in Unique Container - \$25 cash prize for 1st place winner donated by **Carmen Peccie**

RULES

1. Exhibitors are encouraged to refer to [Judging and Exhibiting Standards for Horticultural Shows](#). These standards will be used by the Judges and include directions for quantities and display.
2. Exhibitors may enter two entries in the same class if they are of different varieties.
3. All entries must be locally grown.
4. No restricted, noxious, or nuisance weeds. Check www.abinvasives.ca (Invasive Species/Plants) and from the Foothills County Agricultural Services Board.
5. If you selected the class Blank Tag you must complete all the information on the exhibit tag before submitting it for judging.

GUIDELINES & TIPS

1. A bouquet is not an arrangement. A bouquet is when you collect flowers in your hand and drop them into a vase - do not arrange them in a vase.
2. Submit the exact number of blooms when specified in the class to avoid disqualification.
3. Please name varieties, if possible.
4. Condition of flowers is very important - they should be very fresh.
5. Choose uniform blooms when entering any annual classes.
6. Containers are judged only in the Unusual Containers and Arrangement classes.

***Note to Parents: Please accept that your child's ideas might be better than yours!
The Judges will expect the exhibitors to do 95% of the work on their entries.***

DIVISION 4500 - AGES 6 & UNDER

CLASS	CLASS DESCRIPTION
-------	-------------------

4501	Bouquet of Flowers - Assorted colours
4502	A Quart Sealer of Wild Flowers & Grasses - May include seeds & berries
4503	Flowers in an Unusual Container
4504	Woodland Scene - With native plants (Bonus points if water is added to the scene)
4505	Miniature Garden - With at least 3 different plants & accessories. Use miniature figures & decorations.
4506	Any Flower - 1 stem only, annual or perennial
4507	Sunflower - Tallest (cut off at ground level)
4508	Create a Square Foot Garden (30 cm or 12 in) Garden - plant anything

DEPARTMENTS, DIVISIONS & CLASS LISTS

DIVISION 4600 – AGES 11 & UNDER

CLASS	CLASS DESCRIPTION
-------	-------------------

- | | |
|------|---|
| 4601 | Bouquet of Flowers - Assorted colours |
| 4602 | A Quart Sealer of Wild Flowers & Grasses - May include seeds & berries |
| 4603 | Flowers in An Unusual Container |
| 4604 | Woodland Scene - With native plants and a water display |
| 4605 | Miniature Garden - With at least 3 different plants and miniature accessories |
| 4606 | Sunflowers - Collection of 3 in container |
| 4907 | Sunflower - Tallest (cut off at ground level) |
| 4608 | Arrangement in a Coffee Mug or Tea Cup |
| 4609 | Create a Square Foot Garden (30 cm or 12 in) - plant anything |
| 4610 | Any Flower - 1 stem only, annual or perennial |

DIVISION 4700 – AGES 17 & UNDER

CLASS	CLASS DESCRIPTION
-------	-------------------

- | | |
|------|---|
| 4701 | Bouquet of Flowers - In your favourite container |
| 4702 | A Quart Sealer of Wild Flowers & Grasses - May include seeds & berries |
| 4703 | Woodland Scene - With native plants and a water display |
| 4704 | Diminutive Arrangement - Not to exceed 18 cm (6") in any direction |
| 4705 | Miniature Garden - With at least 3 different plants and miniature accessories |
| 4706 | Novelty arrangement using wood, rocks, plant and imagination |
| 4707 | Arrangement in Unique Container |
| 4708 | Sunflowers - Collection of 3 in container |
| 4709 | Sunflower - Tallest (cut off at ground level) |
| 4710 | Create a Square Foot Garden (30 cm or 12 in) - plant anything |
| 4711 | Any Flower - 1 stem only, annual or perennial |



DEPARTMENTS, DIVISIONS & CLASS LISTS

5000

HOME COOKING & BAKING

DEPARTMENT MANAGER: Patty Webb | webb.patty@hotmail.com

2025 DEPARTMENT DONOR: Patty Webb in memory of Ruth Hoy

2024 AWARD OF EXCELLENCE WINNER: Elena Truelove

Entry Fee: \$2 | Prize Payouts: 1st \$10, 2nd \$6, 3rd \$4

Use the Bench entry form at the back of this book or enter online at <https://www.assistexpo.ca/priddis-millarville-fair>

SPECIAL AWARDS:

Award of Excellence for the Best Exhibit in the Department - Rosette & \$75 **Sobeys** gift card

Honourable Mention to Award of Excellence - Rosette & \$25 **Sobeys** gift card

Division 5075 - Pie Auction - Prize Payout 1st to 10th place: \$50 to \$5 donated by **Gwen & Wayne Blatz in memory of Jessie Adams**

Rosette for the Best Exhibit in each Division along with a \$25 cash prize awarded as follows:

Yeast Breads - donated by **Cathie Scatterty in memory of Effie Madsen**

Quick Breads - donated by **Lauren Hitchner in memory of Janette Burrows**

Pies & Tarts - donated by **Gill Ross in memory of Jim Ross**

Cookies - donated by **Sandra Neish in memory of Dot Gerlitz**

Squares - donated by **Cathie Scatterty in memory of Helen Preston**

Cakes - donated by **the Richardson Family in memory of Snoopy**

Candy - donated by **Jeanne Brkich in memory of Frances Hoy**

Preserves - Jam, Jelly, Marmalade - donated by **Teresa Boyce**

Preserves - Canned Fruit - donated by **Kathy Flundra in memory of Lucille Glaister**

Preserves - Pickles, Relish, Chutney - donated by **Diana Hocking in memory of Minna Piper**

Specialty Classes - donated by **Teresa Boyce**

Gluten Free - donated by **Dale Burritt**

Class 5055 - Saskatoon Pie - \$100 cash prize to 1st place winner, donated by **Harry Cowan, in memory of Martha Cowan**

Go to the [MRAS Website](#) for tips and tricks for baking for the Fair.

RULES

1. Entries which do not conform to specifications in the class description will not be judged.
2. All exhibits must be the work of the exhibitor.
3. No commercial mixes or fillings allowed, unless specified in the class description
4. Pies in Division 5050 cannot be smaller than 10 cm in diameter.
5. Fair officials cannot undertake to arrange the sale of exhibits, except for auction items.
6. Judges appreciate any pertinent information to describe your entry on the entry tag. e.g. type of fruit in fruit pie class, variety of cookie in cookie classes.
7. Display effectively: we encourage the use of props such as doilies, baskets, or colourful napkins to give the exhibit additional eye appeal.

DIVISION 5000 – YEAST BREADS

CLASS	CLASS DESCRIPTION				
5001	Loaf - White bread	5004	Loaf - Yeast bread	5007	3 Cinnamon Buns
5002	Loaf - Brown bread	5005	3 Plain White Rolls	5008	Fancy Yeast Bread
5003	Loaf - Herb bread	5006	3 Whole Wheat Rolls	5009	Loaf - Sourdough bread / Artisan bread

DEPARTMENTS, DIVISIONS & CLASS LISTS**DIVISION 5020 – QUICK BREADS**

CLASS CLASS DESCRIPTION

5021	3 Bran Muffins - Dates or raisins optional	5025	Other Loaf - Zucchini, date, nut etc
5022	3 Muffins Other Than Bran	5026	3 Baking Powder Biscuits - Option to add cheese, seasonings etc
5023	Lemon Loaf - Not cut	5027	3 Scones
5024	Banana Loaf - Not cut		

DIVISION 5050 – PIES & TARTS**(All pastry and fillings must be homemade. Pies can't be smaller than 10 cm or 4" in diameter)**

CLASS CLASS DESCRIPTION

5051	Apple Pie - 2 Crust	5054	Pumpkin Pie	5057	Pecan Pie
5052	Raisin Pie - Lattice top	5055	Saskatoon Pie	5058	3 Butter Tarts
5053	Rhubarb Pie - 2 Crust	5056	Fruit Pie - Peach, Plum etc	5059	3 Tarts - Any filling

DIVISION 5075 - PIE AUCTION (Pie auction exhibits no smaller than 20 cm or 8" diameter)

CLASS CLASS DESCRIPTION

5076	Pie Auction - Please NO cream, meringue or pumpkin pies. Pies and pans will not be returned to the exhibitor. To assist the auctioneer with promoting your pie, you MUST provide a note detailing the type of pie and any interesting details. Pies without a note attached will be disqualified. ***Please see Special Awards
-------------	---

DIVISION 5100 – COOKIES

CLASS CLASS DESCRIPTION

5101	3 Shortbread Cookies	5105	3 Oatmeal Cookies
5102	3 Whipped Shortbread Cookies	5106	3 Rolled Cookies - Dough rolled & cut into shapes
5103	3 Drop Cookies	5107	3 Molded or Shaped Cookies - Molded in hands or pressed
5104	3 Chocolate Chip Cookies	5108	3 Peanut Butter Cookies

DIVISION 5110 – SQUARES

CLASS CLASS DESCRIPTION

5111	3 Squares - Unbaked
5112	3 Squares - Baked, icing optional
5113	3 Brownies - Icing optional

DIVISION 5120 – CAKES (OPTION TO EXHIBIT A WHOLE OR HALF CAKE)

CLASS CLASS DESCRIPTION

5121	Chiffon Cake - Not iced
5122	Spice Cake - Icing optional
5123	Chocolate Layer Cake - Iced
5124	Fruit Cake - Light or dark, not iced, not cut
5125	Coffee Cake
5126	Any Other Baked Cake Not Listed Above - Icing optional

DEPARTMENTS, DIVISIONS & CLASS LISTS**DIVISION 5150 – CANDY**

CLASS	CLASS DESCRIPTION	
5151	Truffles - 3 Pieces	5154 Nut Brittle - 3 Pieces
5152	Chocolate Fudge - 3 Pieces	5155 Any Other Candy - 3 Pieces
5153	Other Fudge - 3 Pieces, brown sugar, peanut butter etc	

DIVISION 5200 – PRESERVES – JAM, JELLY, MARMALADE, LEMON CURD (JARS MUST BE LABELLED & DATED)

CLASS	CLASS DESCRIPTION	
5201	Strawberry or Raspberry Jam - 1 Jar	5205 Crabapple Jelly - 1 Jar
5202	Jam other than Strawberry or Raspberry - 1 Jar	5206 Jelly other than Crabapple - 1 Jar
5203	Freezer Jam - 1 Jar	5207 Lemon Curd - 1 Jar
5204	Marmalade - 1 Jar	

DIVISION 5210 – PRESERVES – CANNED FRUIT (JARS MUST BE LABELLED & DATED)

CLASS	CLASS DESCRIPTION
5211	Canned Fruit Peaches - 1 Jar
5212	Canned Fruit Other Than Peaches - 1 Jar

DIVISION 5220 – PRESERVES – PICKLES, RELISH, CHUTNEY, SAUCES (JARS MUST BE LABELLED & DATED)

CLASS	CLASS DESCRIPTION	
5221	Beet Pickles - 1 Jar	5225 Chutney - 1 Jar
5222	Pickles - Sliced, chunked or whole, 1 Jar	5226 Relish - 1 Jar
5223	Dill Pickles - 1 jar	5227 BBQ Sauce - 1 Jar
5224	Pickled Vegetables - 1 Jar	5228 Salsa - 1 Jar, Processed

DIVISION 5300 – SPECIALTY CLASSES

CLASS	CLASS DESCRIPTION
5301	Heritage Item - Include Recipe & Story
5302	3 Decorated Cookies in Fair Theme (Country Fun for Everyone)
5303	Specialty Cupcakes - 3 cupcakes, judged on flavour & presentation
5304	Decorated Cake or 3 Cupcakes in Fair Theme (Country Fun for Everyone), only decoration judged
5305	Homemade Granola - Include recipe
5306	Honey-Baked Product - Include recipe
5307	Cheesecake (Baked) - option of exhibiting a whole or half cake

DIVISION 5310 – GLUTEN FREE (EACH ENTRY MUST HAVE A RECIPE ATTACHED)

CLASS	CLASS DESCRIPTION
5311	Gluten Free Quick Bread - 1 loaf or 3 muffins
5312	Gluten Free Pie or 3 Tarts
5313	Gluten Free Cookies - 3
5314	Gluten Free Cake, 3 Cupcakes or 3 Squares

DIVISION 5370 – DISASTER RECLAMATION

CLASS	CLASS DESCRIPTION
5371	If there is an unexpected loss and/or damage to an entry in any class in the Department, you can move your creative salvage to this class. Include a written note to explain the loss that will be considered in the judging of the entry. No more than 2 entries per exhibitor in this class.

HOME COOKING & BAKING - JUNIOR

DEPARTMENT MANAGERS: Patty Webb | webb.patty@hotmail.com, Adele DePauw | 108adele@gmail.com

2024 AWARD OF EXCELLENCE WINNER: Josey Rawson

Entry Fee: \$2 | Prize Payouts: 1st \$10, 2nd \$6, 3rd \$4

Use the Bench entry form at the back of this book or enter online at <https://www.assistexpo.ca/priddis-millarville-fair>**SPECIAL AWARDS:**Award of Excellence for the Best Exhibit in the Department - Rosette, \$40 **Sobeys** gift cardBest of Division Rosette, \$20 **Sobeys** gift card & \$25 cash prize donated by **Square Butte Ladies Group** awarded to best exhibit in each Division: Ages 6 & Under | Ages 11 & Under | Ages 17 & Under**RULES**

1. Entries which do not conform to the specifications in the class descriptions will not be judged.
2. All entries must be the work of the exhibitor.
3. No cake mixes or commercial fillings allowed except in classes 5518, 5521, 5522, 5552, 5556, 5557.
4. All cooking and baking exhibits should be enclosed in clear plastic bags. Please do not wrap entries just in plastic wrap.
5. Display effectively: we encourage the use of any additional props such as dollies, baskets, or colourful napkins to give the exhibit additional eye appeal.

DIVISION 5500 – AGES 6 YEARS & UNDER

CLASS	CLASS DESCRIPTION		
5501	3 Traditional Chocolate Chip Cookies	5504	3 Brownies - Icing optional
5502	1 Large Decorated Cookie	5505	3 Unbaked Cookies or Squares
5503	3 Decorated Cupcakes		

DIVISION 5510 – AGES 11 YEARS & UNDER

CLASS	CLASS DESCRIPTION
5511	3 Baking Powder Biscuits
5512	3 Traditional Chocolate Chip Cookies
5513	3 "My Favourite Baked Cookie" - One variety, not chocolate chip. MUST name type of cookie and why it is a favourite.
5514	3 Muffins - Any kind
5515	3 Brownies - icing optional
5516	Banana Loaf
5517	3 Traditional Iced Cupcakes - Any flavour
5518	3 Decorated Cupcakes - ALL decorations must be edible. Only decorating will be judged. Cake mix may be used.
5519	Chocolate Cake - Iced
5520	My Favourite Cake - Icing optional. MUST name type of cake and WHY it is a favourite.
5521	Decorated Cake - Featuring predominantly FONDANT decoration (75%) using the Fair Theme 'Country Fun for Everyone'. Everything must be edible. Only the decorating will be judged. Cake mix may be used
5522	Decorated Cake - NOT featuring FONDANT (less than 25%) using the Fair Theme 'Country Fun for Everyone'. Everything must be edible. Only decorating will be judged. Cake mix may be used.
5523	1 Large Decorated Cookie - ALL decorations must be edible. Only decorating will be judged.
5524	Gluten Free Exhibit - MUST have Recipe attached
5525	Pancakes - Fruit Optional
5526	Nutritious Snack - MUST have ingredient list attached
5527	Fruit and Vegetable Creative Display
5528	School Lunch - in a portable lunch bag or container. MUST include Menu.
5529	Adventure Lunch - *NEW* in a creative portable container. MUST include Theme ('gone fishin', off to the rodeo, summer picnic etc) and menu.
5530	Baked Item - Ages 11 years and under, with Adult

DEPARTMENTS, DIVISIONS & CLASS LISTS

DIVISION 5540 – AGES 17 YEARS & UNDER

CLASS	CLASS DESCRIPTION
5541	Yeast Bread - 1 loaf or 3 rolls
5542	3 Cinnamon Rolls
5543	3 "My Favourite Baked Cookie" - one variety, not chocolate chip. MUST name type of cookie and why it is a favourite.
5544	3 Chocolate Chip Cookies
5545	3 Fancy Squares
5546	3 Tarts - Any filling
5547	1 Pie - Any crust. NO canned filling. Minimum size 10cm.
5548	Chiffon Cake - Not Iced
5549	Spice Cake - Icing optional
5550	Chocolate Layer Cake - Iced
5551	3 Iced Cupcakes - Any flavour. Not decorated.
5552	3 Decorated Cupcakes - ALL decorations must be Edible. Only decorating will be judged. Cake mix may be used.
5553	3 Brownies - Icing optional.
5554	Quick Bread - 1 loaf of any kind, e.g. pumpkin, banana, etc.
5555	3 Muffins - Any kind
5556	Decorated Cake - Featuring predominantly FONDANT decoration (75%) using the Fair Theme 'Country Fun for Everyone'. Everything must be edible. Only the decorating will be judged. Cake mix may be used
5557	Decorated Cake - NOT featuring FONDANT (less than 25%) using the Fair Theme "Country Fun for Everyone". Everything must be edible. Only decorating will be judged. Cake mix may be used.
5558	Cooked Candy - 3 pieces, any type (fudge, brittle, toffee, etc)
5559	1 Large Decorated Cookie - ALL decorations must be Edible. Only decorating will be judged.
5560	Nutritious Snack - MUST have Ingredients attached
5561	Gluten Free BAKED Exhibit - MUST have Recipe attached.
5562	Gluten Free UNBAKED Exhibit - MUST have Recipe attached.
5563	"Tea with Grandpa" - Must include Menu for 2. Presentation may include up to 3 Menu Items. Be creative with presentation on tray/plate no more than 18" across.

DIVISION 5580 – DISASTER RECLAMATION

CLASS	CLASS DESCRIPTION
5581	If there is a sudden and unexpected loss and/or damage to the fair entry in any class(es) in the Department, you can move your creative salvage to this class. Your presentation, along with a sense of humour, will be considered in the judging of the entry. No more than 2 entries per exhibitor in this class. Written story to accompany entry. Moving an entry to this class can be done at the sign in table.



DEPARTMENTS, DIVISIONS & CLASS LISTS

8000

PHOTOGRAPHY

DEPARTMENT MANAGERS: Sheila Giles-Smith | sheila77.smith@gmail.com, Barb Larson, Laura James, Julie Thomson, Kathy McCabe

2025 DEPARTMENT DONORS: Mike & Barb Parker

2024 AWARD OF EXCELLENCE WINNER: Julie Thomson

Entry Fee: \$2 | Prize Payouts: 1st \$10, 2nd \$6, 3rd \$4

Use the Bench entry form at the back of this book or enter online at <https://www.assistexpo.ca/priddis-millarville-fair>

SPECIAL AWARDS:

Award of Excellence for the Best Exhibit in the Department - Rosette, \$100 cash prize donated by **Sheep Creek Arts Council**, 16x20 canvas mount for winning photo from **Calgary Custom Photo Service**, 3"x1" Brass Plate donated by **Sheila Smith**, plus name of winner engraved on the **Myrna McKay Memorial Trophy**

Class 8018 - Water - \$25 cash prize to 1st place winner donated by **Kathy McCabe**

Class 8020 - Humour - \$25 cash prize to 1st place winner donated by **Kathy McCabe**

RULES

1. Photographs must not have been shown at any previous Priddis & Millarville Fair and must be the original work of the exhibitor and an original photo, not a photo of a photo.
2. Photographs may be either in colour or black/white, at the discretion of the photographer if one or the other is not specified in the class description.
3. All photographs must be printed a MINIMUM size of **8 x 8** inches, up to a MAXIMUM size of **12 x 12** inches, square or rectangle. Photos MUST be mounted on a HARD medium (i.e. foam core board) (NOT cardstock) so they do not bend. NO FRAMES. Borders no more than ¼" in either plain black OR white. No further matting. No fancy added borders. If printing and mounting criteria are not met, the entry will not be judged.
4. One photo entry per exhibitor per class.
5. Editing allowed for all classes. Be careful not to over edit.

DIVISION 8000 – PHOTOGRAPHY

CLASS CLASS DESCRIPTION

8001	Large Wild Animals - Moose, elk, deer, etc	8011	Action & Sports
8002	Small Wild Animals - Chipmunk, racoons, fox, etc	8012	Photographer's Choice - Colour
8003	Birds - Birds of prey, waterfowl	8013	Close Up
8004	Birds - Small backyard birds	8014	Wildflowers, fungi, plants, etc.
8005	Landscape - Mountains & foothills	8015	Domestic Animal
8006	Landscape - Prairies, Badlands, forests	8016	Reflections
8007	Sunset or Sunrise - Colour	8017	Animals in Captivity - Zoo, tourist park
8008	Travel Outside of Canada	8018	Water - oceans, lakes, rivers, streams, ponds, falls
8009	Portrait	8019	Night Photography - Colour
8010	Man-made Objects from Bygone Era	8020	Humour - Make the Viewers Laugh - Family Appropriate

DEPARTMENTS, DIVISIONS & CLASS LISTS

PHOTOGRAPHY - JUNIOR

DEPARTMENT MANAGERS: Sheila Giles-Smith | sheila77.smith@gmail.com, Barb Larson, Laura James, Julie Thomson, Kathy McCabe

2025 DEPARTMENT DONORS: Mike & Barb Parker

2024 AWARD OF EXCELLENCE WINNER: Lee Vizer

Entry Fee: \$2 | Prize Payouts: 1st \$10, 2nd \$6, 3rd \$4

Use the Bench entry form at the back of this book or enter online at <https://www.assistexpo.ca/priddis-millarville-fair>

SPECIAL AWARDS:

Award of Excellence Rosette for the Best Exhibit in the Department

Best of Division Rosette awarded to the Best Exhibit for Ages 6 & Under

Best of Division Rosette awarded to the Best Exhibit in Ages 7-12 and \$25 cash prize donated by **Barb & Cliff Larson**

Best of Division Rosette awarded to the Best Exhibit in Ages 13-17 and \$25 cash prize donated by **Barb & Cliff Larson**

Class 8534 - Selfie/Friends or Family - \$25 cash prize to 1st place winner, donated by **Kathy McCabe**

Class 8537 - Lines & Designs - \$25 cash prize to 1st place winner, donated by **Kathy McCabe**

RULES

1. Photographs must not have been shown at any previous Priddis & Millarville Fair and must be the original work of the exhibitor and an original photo, not a photo of a photo.
2. **Division 8500 & 8510** - Photos must be **4x6** inches and mounted on **5x7** inch poster board or cardstock (NOT construction paper). NO FRAMES. No fancy added borders. (Recommend "3M Scotch" Permanent Double-Sided Tape). **If printing and mounting criteria are not met, the entry will not be judged.**
3. **Division 8530** - Photos must be **5x7** inches and mounted on **6x8** inch poster board or cardstock (NOT construction paper). No further matting. NO FRAMES. No fancy added borders. (Recommend "3M Scotch" Permanent Double-Sided MTape). **If printing and mounting criteria are not met, the entry will not be judged.**
4. Photographs may be either in colour or black/white at the discretion of the photographer if one or the other is not specified in the class description.
5. Basic editing adjustments are allowed for all photos.
6. Enhancements and digital manipulation are allowed where specified by the class description.
7. One photo entry per exhibitor per class.

DIVISION 8500 – AGES 6 YEARS & UNDER

CLASS	CLASS DESCRIPTION
8501	My Pet
8502	Your Choice

DIVISION 8510 – AGES 7 - 12 YEARS

CLASS	CLASS DESCRIPTION	CLASS	CLASS DESCRIPTION
8511	Pets	8515	Plants & Flowers
8512	Wildlife - Includes animals, birds, insects, reptiles etc.	8516	Green - Photos of green objects
8513	Person or People	8517	Old Farm Buildings, Equipment or Machinery
8514	Landscape	8518	Photographer's Choice

DIVISION 8530 – AGES 13 - 17 YEARS

CLASS	CLASS DESCRIPTION	CLASS	CLASS DESCRIPTION
8531	Domestic Animals	8535	Landscape
8532	Animals in Captivity - Zoo, tourist park	8536	Plants & Flowers
8533	Close Ups	8537	Lines & Designs
8534	Selfie/Friends or Family - Family appropriate	8538	Photographer's Choice

DEPARTMENTS, DIVISIONS & CLASS LISTS

3000

VEGETABLES & FRUIT

DEPARTMENT MANAGER: Arlene Visser | vissera@hotmail.com

2025 DEPARTMENT DONORS: Bill Jackson & Edith Morlidge in memory of Ida & John Jackson

2024 AWARD OF EXCELLENCE WINNER: Edie Pujo

Entry Fee: \$2 | Prize Payouts: 1st \$10, 2nd \$6, 3rd \$4

Use the Bench entry form at the back of this book or enter online at <https://www.assistexpo.ca/priddis-millarville-fair>

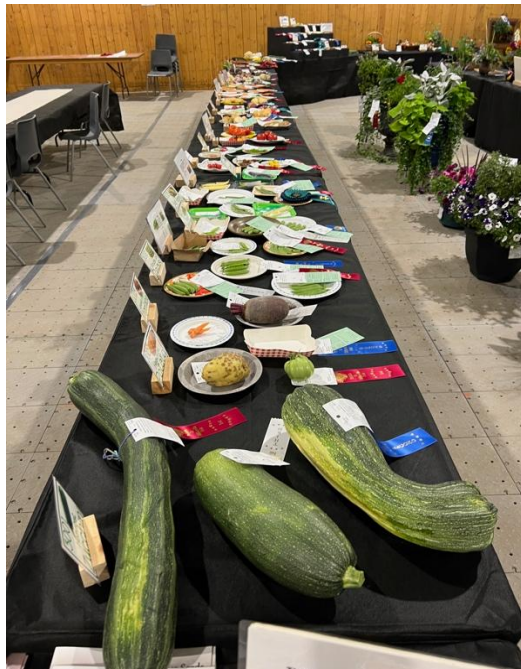
SPECIAL AWARDS:

Award of Excellence Rosette for the Best Exhibit in the Department - \$100 gift card donated by "greengate Garden Centers"
Best of Division Rosette awarded to Best Exhibit in each Division: Small Vegetable | Medium Vegetable | Large Vegetable | Display | Fresh Fruit

Class 3052- Artistic Arrangement of Any Items From Vegetables & Fruit With Needed Accessories to Salute the Theme of The Fair and name of 1st place winner engraved on the **John & Ida Jackson Memorial Award Trophy**

RULES

1. Exhibitors are encouraged to refer to [Judging and Exhibiting Standards for Horticultural Shows](#). These standards will be used by the judges and include directions for quantities and display.
2. Entries which do not conform to specifications in the class description will not be judged.
3. Please include the name of the fruit or vegetable variety for your exhibit if possible.
4. Exhibitors may enter two exhibits in the same class if they are of different varieties. If entering a second variety, the name of the variety should be given for both entries.
5. If there are three or more entries of one variety in a class, that variety will be judged separately.
6. All entries must be locally grown.
7. If you selected the class Blank Tag, you must complete all the information on the exhibit tag before submitting it for judging.



DEPARTMENTS, DIVISIONS & CLASS LISTS**DIVISION 3000 – GENERAL**

CLASS	CLASS DESCRIPTION
-------	-------------------

3001	Heaviest Zucchini	3002	Heaviest Potato	3003	Unusual Shaped Vegetable
-------------	-------------------	-------------	-----------------	-------------	--------------------------

DIVISION 3010 – SMALL VEGETABLES

CLASS	CLASS DESCRIPTION
-------	-------------------

3011	5 Pods of Peas	3014	5 Beans - Any other variety
3012	5 Pods of Edible Peas	3015	5 Cherry Tomatoes
3013	5 Bush Beans - Yellow, green, purple	3016	5 of Any Other Small Vegetable

DIVISION 3020 – MEDIUM VEGETABLES

CLASS	CLASS DESCRIPTION
-------	-------------------

3021	3 Tomatoes - Stems on	3028	3 Carrots - Over 20 cm in length
3022	3 Potatoes - Russet	3029	3 Garlic Heads
3023	3 Potatoes - White Skin	3030	3 Onions - Skin left on
3024	3 Potatoes - Red Skin	3031	3 Beets - Red, global
3025	3 Potatoes - Coloured or yellow flesh	3032	3 Beets - Red, cylindrical
3026	3 Carrots - Up to 10 cm (4 inches) in length	3033	3 Stalks Rhubarb
3027	3 Carrots - Length between 10 & 20 cm (4-8 inches)	3034	3 of Any Other Medium Sized Vegetable

DIVISION 3040 – LARGE VEGETABLES

CLASS	CLASS DESCRIPTION
-------	-------------------

3041	1 of Any Large Sized Vegetable
-------------	--------------------------------

DIVISION 3050 – DISPLAYS

CLASS	CLASS DESCRIPTION
-------	-------------------

3051	Basket of Salad Vegetables
3052	Artistic Arrangement of Any Items From Vegetables & Fruit With Needed Accessories to Salute The Theme of The Fair (Country Fun for Everyone)
3053	Collection of Herbs

DIVISION 3070 – FRESH FRUIT

CLASS	CLASS DESCRIPTION
-------	-------------------

3071	6 Raspberries
3072	3 of Any Other Large Fruit
3073	6 of Any Other Small Fruit

DIVISION 3090 – DISASTER RECLAMATION

CLASS	CLASS DESCRIPTION
-------	-------------------

3091	If there is an unexpected loss and/or damage to an entry in any class in the Department, you can move your creative salvage to this class. Include a written note to explain the loss that will be considered in the judging of the entry. No more than 2 entries per exhibitor in this class.
-------------	--

DEPARTMENTS, DIVISIONS & CLASS LISTS

3500

VEGETABLES & FRUIT - JUNIOR

DEPARTMENT MANAGERS: Jill Dakers | GillianTDakers@gmail.com, Arlene O'Brien | ArleneOB@gmail.com

2025 DEPARTMENT DONORS: Scott Daniel Seaman Memorial Fund

2024 AWARD OF EXCELLENCE WINNER: Gavan Klemencic

Entry Fee: \$2 per class | Prize Payouts: 1st \$10, 2nd \$6, 3rd \$4

Use the Bench entry form at the back of this book or enter online at <https://www.assistexpo.ca/priddis-millarville-fair>

SPECIAL AWARDS:

Award of Excellence Rosette for the Best Exhibit in the Department, a \$10 cash prize donated by **Shirley Goerlitz in memory of Cecilia Taylor**, and a gift basket donated by **Patty Webb**

Class 3508, 3608, 3708 - Edible Medicinal Plant - \$25 cash prize for 1st place winner donated by **Pat and Arlene O'Brien**

Best of Division Rosette awarded to Best Exhibit in each Division: Ages 6 & Under | Ages 11 & Under | Ages 17 & Under

RULES

1. Exhibitors are encouraged to refer to [Judging and Exhibiting Standards for Horticultural Shows](#). These standards will be used by the Judges and include directions for quantities and display.
2. Please name the variety and display your exhibits on a firm paper plate or container with tags securely attached to prevent entries getting mixed up.
3. Exhibitors may exhibit two entries in the same class when not the same variety.
4. All entries must be locally grown.
5. If you selected the class Blank Tag, you must complete all the information on the exhibit tag before submitting it for judging.

DIVISION 3500 – VEGETABLES – AGES 6 & UNDER

CLASS	CLASS DESCRIPTION
3501	An Odd Shaped Vegetable
3502	"Crookedest" Carrot - Top trimmed to 1 cm and roots neatly trimmed
3503	Longest Carrot - Top trimmed to 1 cm
3504	Heaviest Zucchini
3505	Any Other Vegetable - Your Choice
3506	Scabbiest Potato
3507	Veggie/Fruit Carving - Resembling any item
3508	Edible-Medicinal Plant - 1 sample (Dandelion, Plantain, Comfrey, etc,) labelled, on display board

DIVISION 3600 – VEGETABLES – AGES 11 & UNDER

CLASS	CLASS DESCRIPTION
3601	An Odd Shaped Vegetable
3602	"Crookedest" Carrot - Top trimmed to 1 cm and roots neatly trimmed
3603	Heaviest Zucchini
3604	Heaviest Potato
3605	Veggie/Fruit Carving - Resembling any item
3606	Any Other Vegetable - Your Choice
3607	Scabbiest Potato
3608	Edible-Medicinal Plant - 3 sample (Dandelion, Plantain, Comfrey, etc,) labelled, on display board

DEPARTMENTS, DIVISIONS & CLASS LISTS

DIVISION 3700 – VEGETABLES – AGES 17 & UNDER

CLASS	CLASS DESCRIPTION
3701	3 Carrots - Tops trimmed to 1 cm and roots neatly trimmed
3702	3 Onions - Skins left on
3703	3 Potatoes - Any colour
3704	5 Pods of Peas - Any variety
3705	Veggie/Fruit Carving - Resembling any item
3706	Any Other Vegetable - Your Choice
3707	Scabbiest Potato
3708	Edible-Medicinal Plant - 5 sample (Dandelion, Plantain, Comfrey, etc.) labelled, on display board

DIVISION 3725 – FRESH FRUIT – AGES 6 & UNDER

CLASS	CLASS DESCRIPTION
3726	3 Fruits of the Same Type - Saskatoons, crabapples, raspberries etc
3727	3 Stalks Rhubarb

DIVISION 3735 - FRESH FRUIT - AGES 11 & UNDER

CLASS	CLASS DESCRIPTION
3736	3 Fruits of the Same Type - Saskatoons, crabapples, raspberries etc
3737	3 Stalks Rhubarb

DIVISION 3745 – FRESH FRUIT – AGES 17 & UNDER

CLASS	CLASS DESCRIPTION
3746	3 Fruits of the Same Type - Saskatoons, crabapples, raspberries etc
3747	3 Stalks of Rhubarb



DEPARTMENTS, DIVISIONS & CLASS LISTS

9000

WOODWORKING

DEPARTMENT MANAGER: Adam Buchholz | adambucholz77@gmail.com

2024 AWARD OF EXCELLENCE WINNER: Hannah Mortimer

Entry Fee: \$2 | Prize Payouts: 1st \$10, 2nd \$6, 3rd \$4

Use the Bench entry form at the back of this book or enter online at <https://www.assistexpo.ca/priddis-millarville-fair>

SPECIAL AWARDS:

Award of Excellence Rosette for the Best Exhibit in the Department

Class 9001 - \$25 cash prize donated by **Cathie Scatterty in memory of Jim Scatterty**

RULES:

1. Exhibits must not have been shown at any previous Priddis & Millarville Fair and must be the original work of the exhibitor.
2. **LIMIT OF TWO ENTRIES** per class per exhibitor.

DIVISION 9000 – WOODWORKING

CLASS	CLASS DESCRIPTION	
9001	Furniture	9005 Handcrafted Toy - Not From Kit
9002	Birdhouse	9006 Any Other Article Under 45cm (18 in)
9003	Woodwork - Turned	9007 Any Other Article Over 45cm (18 in)
9004	Woodwork - Carved	9008 Wooden Article Incorporating a Canadian Design

DEPARTMENTS, DIVISIONS & CLASS LISTS

WOODWORKING - JUNIOR

DEPARTMENT MANAGER:

Adam Bulcholz | adambucholz77@gmail.com

2024 AWARD OF EXCELLENCE WINNER: Calvin Berrigan

Entry Fee: \$2 | Prize Payouts: 1st \$10, 2nd \$6, 3rd \$4

Use the Bench entry form at the back of this book or enter online at <https://www.assistexpo.ca/priddis-millarville-fair>

SPECIAL AWARDS:

Award of Excellence Rosette for the Best Exhibit in the Department
Best of Division Rosette awarded to the best exhibit in Division Ages 6 & Under | Ages 11 & Under

Best of Division Rosette awarded to the best exhibit in Divisions Ages 12 to 14 and Ages 15 to 17 and \$50 cash prize to each winner, donated by **Neil & Di Bates in memory of Jim Scatterty**

Class 9513 - \$25 cash prize donated by **Cathie Scatterty in memory of Jim Scatterty**

RULES

1. Exhibits must not have been shown at any previous Priddis & Millarville Fair and must be the original work of the exhibitor.
2. **LIMIT OF TWO ENTRIES** per class per exhibitor.

DIVISION 9500 – AGES 6 & UNDER

CLASS	CLASS DESCRIPTION
9501	Small Building Project

DIVISION 9510 – AGES 11 & UNDER

CLASS	CLASS DESCRIPTION
9511	Birdhouse, Feeder or Lawn Ornament
9512	Any Other Article Under 45cm (18 in)
9513	Any Other Article Over 45cm (18 in)

DIVISION 9520 – AGES 12 TO 14

CLASS	CLASS DESCRIPTION
9521	Birdhouse, Feeder or Lawn Ornament
9522	Any Other Article Under 45cm (18 in)
9523	Any Other Article Over 45cm (18 in)

DIVISION 9530 – AGES 15 TO 17

CLASS	CLASS DESCRIPTION
9531	Birdhouse, Feeder or Lawn Ornament
9532	Any Other Article Under 45cm (18 in)
9533	Any Other Article Over 45cm (18 in)

DEPARTMENTS, DIVISIONS & CLASS LISTS

2100

BEEF CATTLE

DEPARTMENT MANAGERS: Danielle Bradish | beefcattle.pmfair@gmail.com,
Paul Rishaug | duckinthemuck@hotmail.com

2025 DEPARTMENT DONOR: Hawkview Charolais

2024 AWARD OF EXCELLENCE WINNER: Maddie Watkins

Entry Fee: \$10 | Prize Payouts: Sliding scale based on number of entries per class to a maximum of 1st \$25,
2nd \$15, 3rd \$10

Use Beef Cattle entry form at the back of the Fair book or enter online at <https://www.assistexpo.ca/priddis-millarville-fair>

SPECIAL AWARDS:

Award of Excellence Rosette for the Best Exhibit in the Department

Class 20301 - Commercial Heifer Born Jan 1 - Mar 31 - \$50 cash prize to the 1st place winner donated by **Linda Schaal in memory of Garry, Walter & Lil Schaal**

Class 20302 - Commercial Heifer Born Apr 1 or later - \$50 cash prize to the 1st place winner donated by **Linda Schaal in memory of Garry, Walter & Lil Schaal**

Class 20602 - Commercial Cow/Calf 2 Years Old - \$50 cash prize to the 1st place winner donated by **Linda Schaal in memory of Garry, Walter & Lil Schaal**

RULES

1. Animals must be in place in Infield Tie Racks by 9:00 a.m. on Fair Sunday. Judging begins at 11:00 a.m. in the Rodeo Infield
2. Animals are to stay in place until 4:00 p.m. Sunday.
3. Competitor numbers can be picked up ringside on Sunday morning.
4. No cross entries between purebred and grade classes.
5. Papers must be available if requested for purebred classes.
6. Purebred classes may be combined based on entry count.
7. Commercial classes may be combined based on entry count.

DIVISION 20100 – CALENDAR YEAR CALF

CLASS CLASS DESCRIPTION

20101 Heifer Calf (Born in 2025) **20102** Bull Calf (Born in 2025) **20103** Steer Calf (Born in 2025)

DIVISION 20200 – PUREBRED YEARLING HEIFERS

CLASS CLASS DESCRIPTION

20201 Heifers Born 1 Jan - 31 Mar **20202** Heifers Born April 1 or Later

DIVISION 20300 – COMMERCIAL

CLASS CLASS DESCRIPTION

20301 Heifers Born 1 Jan - 31 Mar **20302** Heifers Born April 1 or Later

DIVISION 20500 – SHOWMANSHIP

CLASS CLASS DESCRIPTION

20501 Exhibitors Age 9 Years & Under **20503** Exhibitors Age 16-21 Years
20502 Exhibitors Age 10-15 Years **20504** Exhibitors Young at Heart (Age 22 & Over)

DEPARTMENTS, DIVISIONS & CLASS LISTS**DIVISION 20600 – COW CALF PAIRS**

CLASS	CLASS DESCRIPTION
20601	Purebred, Cow/Calf 2 Years Old
20602	Commercial, Cow/Calf 2 Years Old
20603	Purebred, Mature Cow/Calf 3 Years & Older
20604	Commercial, Mature Cow/Calf 3 Years & Older

DIVISION 20700 – HERD

CLASS	CLASS DESCRIPTION
20701	Purebred Herd, Heifer, 2 Year Old Cow/Calf, Mature Cow/Calf
20702	Commercial Herd, Heifer, 2 Year Old cow/Calf, Mature Cow/Calf

DEPARTMENTS, DIVISIONS & CLASS LISTS**DAIRY GOATS****DEPARTMENT MANAGER:** Kathleen Arkes | dairygoats.pmfair@gmail.com**2025 DEPARTMENT DONOR:** Western Wrangler Construction**Entry Fee:** \$10 per animal per class | **Prize Payouts:** Sliding scale based on number of entries per class to a maximum of 1st \$25, 2nd \$15, 3rd \$10**Penning Fee:** \$5.00 per pen (10x10)Use Dairy Goat entry form at the back of the Fair book or enter online at <https://www.assistexpo.ca/priddis-millarville-fair>**CANADIAN GOAT SOCIETY SANCTIONED OPEN DOE SHOW****Sunday Only****SPECIAL AWARDS**

Award of Excellence for the overall Best Exhibit (Best Doe in Show) in the department (Sunday) - Rosette

RULES

1. All general rules of the Fair apply. Please read them carefully.
2. CSG show rules shall govern. See them at www.goats.ca.
3. All animals must be in place by 8:00am on Show SUNDAY. The Show will begin at 10:00am.
4. Packages with competitor numbers and classes, order of show etc. will be emailed the week before Fair weekend or can be picked up at ringside Fair Sunday.
5. Tattoo and health check will take place at 9:00am on Fair Sunday. Exhibitors are to have registration papers (physical or electronic) available for viewing at this time. A committee of three CSG (or ADGA) members in good standing will conduct the health inspection. Exhibitors agree to abide by the decision of the health check committee.
6. Preferred show attire is black bottoms and white tops.
7. Group classes will be held at the end of the CSG Sanctioned Open Goat Show and all breeds will compete together.
8. Sharing is allowed as long as the animal in question is exhibited on Fair Weekend.
9. Exhibitors are required to bring their own bedding and feed for their animals. There may be some available for a fee on fair weekend, please contact the department manager for details.

DEPARTMENTS, DIVISIONS & CLASS LISTS**DIVISION 11100 – TOGGENBURG JUNIOR OPEN DOE**

CLASS	CLASS DESCRIPTION
-------	-------------------

- | | |
|-------|--|
| 11101 | Junior Doe Kid: Born April 1st to July 1st of the current year |
| 11102 | Senior Doe Kid: Born January 1st to March 31st of the current year |
| 11103 | Dry Yearling: Born in the previous year and not in milk |

DIVISION 11150 – TOGGENBURG SENIOR OPEN DOE

CLASS	CLASS DESCRIPTION
-------	-------------------

- | | |
|-------|--|
| 11151 | Milking Yearling |
| 11152 | 2 Yr Old in Milk |
| 11153 | 3 & 4 Yr olds in Milk |
| 11154 | 5 Yr and older in Milk |
| 11155 | Champion Challenge (Finished champions with documentation) |

DIVISION 11200 – SAANEN JUNIOR OPEN DOE

CLASS	CLASS DESCRIPTION
-------	-------------------

- | | |
|-------|--|
| 11201 | Junior Doe Kid: Born April 1st to July 1st of the current year |
| 11202 | Senior Doe Kid: Born January 1st to March 31st of the current year |
| 11203 | Dry Yearling: Born in the previous year and not in milk |

DIVISION 11250 – SAANEN SENIOR OPEN DOE

CLASS	CLASS DESCRIPTION
-------	-------------------

- | | |
|-------|--|
| 11251 | Milking Yearling |
| 11252 | 2 Yr Old in Milk |
| 11253 | 3 & 4 Yr olds in Milk |
| 11254 | 5 Yr and older in Milk |
| 11255 | Champion Challenge (Finished champions with documentation) |

DIVISION 11300 – NUBIAN JUNIOR OPEN DOE

CLASS	CLASS DESCRIPTION
-------	-------------------

- | | |
|-------|--|
| 11301 | Junior Doe Kid: Born April 1st to July 1st of the current year |
| 11302 | Senior Doe Kid: Born January 1st to March 31st of the current year |
| 11303 | Dry Yearling: Born in the previous year and not in milk |

DIVISION 11350 – NUBIAN SENIOR OPEN DOE

CLASS	CLASS DESCRIPTION
-------	-------------------

- | | |
|-------|--|
| 11351 | Milking Yearling |
| 11352 | 2 Yr Old in Milk |
| 11353 | 3 & 4 Yr olds in Milk |
| 11354 | 5 Yr and older in Milk |
| 11355 | Champion Challenge (Finished champions with documentation) |

DEPARTMENTS, DIVISIONS & CLASS LISTS**DIVISION 11400 – AOP JUNIOR OPEN DOE**

CLASS	CLASS DESCRIPTION
-------	-------------------

- | | |
|--------------|--|
| 11401 | Junior Doe Kid: Born April 1st to July 1st of the current year |
| 11402 | Senior Doe Kid: Born January 1st to March 31st of the current year |
| 11403 | Dry Yearling: Born in the previous year and not in milk |

DIVISION 11450 – AOP SENIOR OPEN DOE

CLASS	CLASS DESCRIPTION
-------	-------------------

- | | |
|--------------|--|
| 11451 | Milking Yearling |
| 11452 | 2 Yr Old in Milk |
| 11453 | 3 & 4 Yr olds in Milk |
| 11454 | 5 Yr and older in Milk |
| 11455 | Champion Challenge (Finished champions with documentation) |

DIVISION 11500 – LAMANCHA JUNIOR OPEN DOE

CLASS	CLASS DESCRIPTION
-------	-------------------

- | | |
|--------------|--|
| 11501 | Junior Doe Kid: Born April 1st to July 1st of the current year |
| 11502 | Senior Doe Kid: Born January 1st to March 31st of the current year |
| 11503 | Dry Yearling: Born in the previous year and not in milk |

DIVISION 11550 – LAMANCHA SENIOR OPEN DOE

CLASS	CLASS DESCRIPTION
-------	-------------------

- | | |
|--------------|--|
| 11551 | Milking Yearling |
| 11552 | 2 Yr Old in Milk |
| 11553 | 3 & 4 Yr olds in Milk |
| 11554 | 5 Yr and older in Milk |
| 11555 | Champion Challenge (Finished champions with documentation) |

DIVISION 11600 – NIGERIAN DWARF JUNIOR OPEN DOE

CLASS	CLASS DESCRIPTION
-------	-------------------

- | | |
|--------------|--|
| 11601 | Junior Doe Kid: Born April 1st to July 1st of the current year |
| 11602 | Senior Doe Kid: Born January 1st to March 31st of the current year |
| 11603 | Dry Yearling: Born in the previous year and not in milk |

DIVISION 11650 – NIGERIAN DWARF SENIOR OPEN DOE

CLASS	CLASS DESCRIPTION
-------	-------------------

- | | |
|--------------|--|
| 11651 | Milking Yearling |
| 11652 | 2 Yr Old in Milk |
| 11653 | 3 & 4 Yr olds in Milk |
| 11654 | 5 Yr and older in Milk |
| 11655 | Champion Challenge (Finished champions with documentation) |

DEPARTMENTS, DIVISIONS & CLASS LISTS**DIVISION 11700 – ALPINE JUNIOR OPEN DOE****CLASS CLASS DESCRIPTION**

-
- 11701** Junior Doe Kid: Born April 1st to July 1st of the current year
- 11702** Senior Doe Kid: Born January 1st to March 31st of the current year
- 11703** Dry Yearling: Born in the previous year and not in milk

DIVISION 11750 – ALPINE SENIOR OPEN DOE**CLASS CLASS DESCRIPTION**

-
- 11751** Milking Yearling
- 11752** 2 Yr Old in Milk
- 11753** 3 & 4 Yr olds in Milk
- 11754** 5 Yr and older in Milk
- 11755** Champion Challenge (Finished champions with documentation)

DIVISION 11800 – RECORDED GRADE JUNIOR OPEN DOE**CLASS CLASS DESCRIPTION**

-
- 11801** Junior Doe Kid: Born April 1st to July 1st of the current year
- 11802** Senior Doe Kid: Born January 1st to March 31st of the current year
- 11803** Dry Yearling: Born in the previous year and not in milk

DIVISION 11850 – RECORDED GRADE SENIOR OPEN DOE**CLASS CLASS DESCRIPTION**

-
- 11851** Milking Yearling
- 11852** 2 Yr Old in Milk
- 11853** 3 & 4 Yr olds in Milk
- 11854** 5 Yr and older in Milk
- 11855** Champion Challenge (Finished champions with documentation)

DIVISION 11900 – GROUP CLASSES**CLASS CLASS DESCRIPTION**

-
- 11901** Dam and Daughter
- 11902** Progeny of Dam - 2 does from the same dam, junior or senior animals
- 11903** Get of Sire - three does from the same sire, junior or senior animals
- 11904** Dairy Herd - 4 senior animals (in milk), owned by the exhibitor
- 11905** Breeders Herd - 4 animals bred by the exhibitor, may use one junior animal or all senior animals

DIVISION 11950 – YOUTH SHOWMANSHIP**CLASS CLASS DESCRIPTION**

-
- 11951** Junior: Youth 10 years and under as of June 1st
- 11952** Intermediate 1: Youth 11-13 years as of June 1st
- 11953** Intermediate 2: Youth 14-16 years as of June 1st
- 11954** Senior: Youth 17-20 years as of June 1st

DEPARTMENTS, DIVISIONS & CLASS LISTS

0300 POULTRY, WATERFOWL & PIGEONS

DEPARTMENT MANAGER: Callum McLeod | poultry.pmfair@gmail.com

2025 DEPARTMENT DONOR: Western Wrangler Construction

2024 AWARD OF EXCELLENCE WINNER: Adult - CK1 Bantams | Junior - Wesley Van Genugten

American Poultry Association SANCTIONED SHOW - all birds will be judged according to APA standards and the APA show rules shall govern.

Entry Fee: \$5 per bird | Prize Payouts: Sliding Scale based on number of entries per class to a maximum of 1st \$10, 2nd \$8, 3rd \$5

Use the Poultry, Waterfowl & Pigeons entry form at the back of the Fair book or enter online at <https://www.assistexpo.ca/priddis-millarville-fair>

SPECIAL AWARDS:

Award of Excellence Rosette for the Best Exhibit in Adult classes

Award of Excellence Rosette for the Best Exhibit in Junior classes

Division 300 - Large Chicken - name of 1st place winner engraved on the Ross Sanderson Trophy

Division 320 - Waterfowl - name of 1st place winner engraved on the Champion Waterfowl Trophy

Best Bird in Junior Show - Bag of Feed and a Poultry Book donated by **The Cherry Family**

RULES

1. Tags will be affixed to the cages in judging order. Please place your bird in the appropriate cage. All birds must be in place by 8:00 a.m. at the latest, on Fair Saturday in the Quonset. Judging starts at 10:00 a.m. on Saturday.
2. Roosters may be moved to participate in the Rooster Crowing Competition but must be back in place for the start of judging.
3. Birds must remain in place until 4:00 p.m. on Fair Sunday.
4. Please bring your own water containers and feed for your animals.
5. When entering your birds, please provide Breed, Variety (colour) and Sex in the description. C for males over 1 year. K for males under 1 year. H for females over 1 year. P for females under 1 year.

DIVISION 0300 – LARGE CHICKEN

CLASS	CLASS DESCRIPTION
0301	American
0302	Asiatic
0303	English
0304	Mediterranean
0305	Continental
0306	Any Other Standard Breed (AOSB)

DIVISION 0310 – BANTAM CHICKEN

CLASS	CLASS DESCRIPTION
0311	Modern Game Bantam
0312	Game Bantams (OEG/AGB)
0313	Single Comb Clean Leg
0314	Rose Comb Clean Leg
0315	Any Other Comb Clean Leg
0316	Feathered Leg

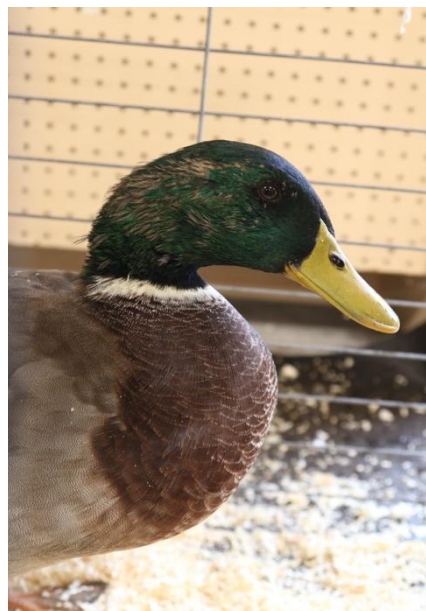


DEPARTMENTS, DIVISIONS & CLASS LISTS**DIVISION 320 – WATERFOWL****CLASS CLASS DESCRIPTION**

- 0321** Bantam Ducks
- 0322** Light Ducks
- 0323** Medium Ducks
- 0324** Heavy Ducks
- 0325** Heavy Geese
- 0326** Medium Geese
- 0327** Light Geese

DIVISION 330 – ANY OTHER FOWL**CLASS CLASS DESCRIPTION**

- 0331** Turkey
- 0332** Helmeted Guinea Fowl

**DIVISION 340 – PIGEONS.****CLASS CLASS DESCRIPTION**

- 0341** Pigeons

DIVISION 350 – DOVES**CLASS CLASS DESCRIPTION**

- 0351** Doves

DIVISION 360 – EGGS, HOME PRODUCED**CLASS CLASS DESCRIPTION**

- 0361** 6 Chicken Eggs
- 0362** 6 Any other Eggs - Waterfowl, Quail, Turkey, etc.
- 0363** Decorated or Painted Egg. Painted, Carved, Decorated, etc.

DIVISION 370 – JUNIOR POULTRY SHOW (17 & UNDER)**CLASS CLASS DESCRIPTION**

- | | |
|---|---|
| <ul style="list-style-type: none"> 0371 Standard Chicken 0372 Bantam Chicken 0373 Waterfowl | <ul style="list-style-type: none"> 0374 Turkey/Guinea Fowl 0375 Pigeon/Dove |
|---|---|

DIVISION 380 – JUNIOR POULTRY SHOWMANSHIP**CLASS CLASS DESCRIPTION**

- | | |
|--|--|
| <ul style="list-style-type: none"> 0381 Exhibitors Age 11 Years & Under 0382 Exhibitors Age 12 to 14 Years | <ul style="list-style-type: none"> 0383 Exhibitors Age 15 years & over |
|--|--|

DIVISION 385 – HOMESTEAD HENS / “JUST DO IT”**CLASS CLASS DESCRIPTION**

- 0386** Egg laying Breeds - ISA Brown, Leghorn etc
- 0387** Meat Production Breeds - Cornish Rock Giants, Broilers, etc
- 0388** Dual Purpose Breeds - Rhode Island Red, Barred Plymouth Rock, etc
- 0389** Most Colourful Crossbred

“Just Do It” Classes - These classes are for those who have been out of the show ring for a while or never entered before, always wanted to try it, or just want to experience something new with their poultry. Classes are open to poultry enthusiasts of all ages. This series is all about the experience and ‘lessons learned best by trying it first-hand’ - no pressure, all positive.

DEPARTMENTS, DIVISIONS & CLASS LISTS

RABBITS

DEPARTMENT MANAGER: Hope Barakat | hopebarakat@yahoo.ca

Entry Fee: \$5/rabbit | Prize Payouts: Sliding scale based on number of entries per class to a maximum of 1st \$10, 2nd \$8, 3rd \$5

RULES

1. Exhibitors entering any of the Division 400 and 410 classes need to register their entries online at <https://www.assistexpo.ca/priddis-millarville-fair> or use the Rabbit entry form at the back of the Fair Book.
2. In addition to the Fair fun shows for Pet and Commercial Rabbits, there will be four American Rabbit Breeders Association Sanctioned Shows throughout Fair weekend. Registration for these shows must be made through the Southern Alberta Rabbit Breeders Association website at www.sarba.info. You do not have to be registered as a Fair exhibitor to participate in the SARBA show.
3. Each exhibitor is responsible for getting their rabbit to the judging table when called. Please pay attention to your breed and class calls. No classes will be re-judged.
4. All rabbits will be judged as provided on the entry forms. Any changes must be approved by the Department Manager.
5. Any animals showing signs of illness, parasites, or disease will be removed from the showroom at the discretion of the Rabbit Show Superintendent.
6. An individual exhibitor may have an unrestricted number of entries per class unless stated otherwise.

DIVISION 400 – PET SHOW CLASSES

(JUDGING BASED ON SHOWMANSHIP AND HUSBANDRY)

CLASS	CLASS DESCRIPTION
0401	Exhibitors 10 years and under
0402	Exhibitors 11 - 15 years
0403	Exhibitors 16 - 21 years
0404	Exhibitors Young at Heart 22 years and older

DIVISION 410 – COMMERCIAL SHOW CLASSES (JUDGING BASED ON RABBIT TYPE)

CLASS	CLASS DESCRIPTION
0411	Rabbits 8 - 10 weeks old - 3.5 to 5.5 lbs
0412	Rabbits under 6 months - 5.5 to 9.0 lbs
0413	Rabbits 6 months - 8 plus lbs
0414	Rabbits Pen of 3, same breed and variety - 8 - 10 weeks old 3.5 to 5.5 lbs



DEPARTMENTS, DIVISIONS & CLASS LISTS

SHEEP

DEPARTMENT MANAGER: Angie Dawson | angdawson@yahoo.ca

Honorary Committee Member: Bill Jackson

Committee Members: Jennifer Runge, Sage Runge, Justin Watkins, Paige Williams

2025 DEPARTMENT DONOR: Red Deer Lake Meat Processing Ltd.

2024 AWARD OF EXCELLENCE WINNERS: Adult - Lorri Lyster, Junior - Hailey Oldale

Entry Fee: \$10/class | **Prize Payouts:** Sliding scale based on number of entries per class to a maximum of 1st \$25, 2nd \$15, 3rd \$10

Use the Sheep entry form at the back of the Fair book or enter online at <https://www.assistexpo.ca/priddis-millarville-fair>

SPECIAL AWARDS:

Award of Excellence Rosette for the Best Exhibit in the Department - Adult and Junior

Champion Purebred Ram - prize sponsored by **Kathy Coutts in memory of Tom Hebson**

Champion Purebred Ewe - prize sponsored by **Tiny Springs Farm**

Champion Grade Breeding Ewe - prize sponsored by **Don and Kathleen Arkes**

Champion Market Lamb

Pen of Market Lambs - trophy donated by **Sundowner Farm**

Costume Class: \$50 cash prize to 1st place winner donated by **Coyote Acres & Sheep Trax**

RULES:

1. Animals must be in place by 8:00 a.m. on Fair Saturday. Judging begins at 10:00 a.m.
2. Animals are to stay in place until 4:00 p.m. Saturday.
3. Competitor numbers (if necessary) can be picked up ringside on Saturday morning.
4. No cross entries between purebred and grade sheep classes.
5. Lambs must be born after December 15th of the previous year.
6. As required by Canadian National Livestock Records, all purebred sheep must be tattooed or double-tagged and have registration papers available upon request.
7. All sheep must be properly shorn this year.
8. Only 2 entries per class per exhibitor.
9. In the showmanship classes the exhibitors are being judged. The exhibitors should be neatly dressed and showing a clean animal. They should be able to handle their animals or any other animal that the judge designates. They should be knowledgeable about their animals (birthdate, breed, etc).
10. Costume Class: both child and sheep should be in costume. Judged 40% on costume and 60% on showmanship (ability to handle sheep). **NOTE:** the costume class will be the very last class of the day, with time allowed to get into costume.



DEPARTMENTS, DIVISIONS & CLASS LISTS**DIVISION 1800 – PUREBRED CLASSES (ALL BREEDS)****CLASS CLASS DESCRIPTION**

- 1801** Yearling Ram
- 1802** Ram Lamb
- 1803** Ewe - 2 years or older
- 1804** Yearling Ewe
- 1805** Ewe Lamb
- 1806** Pen of 2 breeding lambs (ewes or rams)
- 1807** Flock - 4 breeding animals representing both sexes

DIVISION 1820 – GRADE BREEDING CLASSES**CLASS CLASS DESCRIPTION**

- 1821** Ewe - 2 years or older
- 1822** Yearling Ewe
- 1823** Ewe Lamb
- 1824** Flock - 4 breeding animals representing both sexes

DIVISION 1850 – MARKET CLASSES**CLASS CLASS DESCRIPTION**

- 1851** Market Lamb - Exhibitors 10 years or younger
- 1852** Market Lamb - Exhibitors 11 to 17 years
- 1853** Market Lamb - Exhibitors 18 Years or older
- 1854** Pen of 2 Market Lambs - Either Sex - Exhibitors of any age

DIVISION 1870 – SHOWMANSHIP CLASSES**CLASS CLASS DESCRIPTION**

- 1871** Showmanship - Exhibitors 10 years or younger
- 1872** Showmanship - Exhibitors 11 to 17 years
- 1873** Showmanship - Exhibitors 18 years or older

DIVISION 1830 – COSTUME CLASS**CLASS CLASS DESCRIPTION**

- 1831** Costume Class - ages 15 and under. Exhibitors must be able to handle their sheep. Judged on 40% costume and 60% showmanship.



COMPETITIONS ENTRY FORM

TRACTOR PULL, LICKED SALT BLOCK, HONEY, HORSE COSTUME, ROOSTER CROWING

ENTRY DEADLINE: AUGUST 6, 2025

Please use one entry form per exhibitor.

Entries can also be submitted online at: <https://www.assistexpo.ca/priddis-millarville-fair> starting June 1st.

See entry fee payment options at bottom of this page.

Exhibitor Name: _____ Phone: _____

Address: _____ City: _____ Postal Code: _____

Email: _____ Age of Exhibitor as of Jan 1, 2025 (Jr Only): _____

This is the first year I've entered the Fair as an Exhibitor: YES ☐ NO ☐

Please choose one of the following options for prize payouts if you should win:

- ☐ Accept an e-transfer at this email address : _____ (if different from above)
☐ Accept a cheque made out to : _____ (if different from above)
☐ Donate my winnings to the Fair to help cover Fair expenses

COMPETITIONS – DIVISION 0050, 0065, 150, 0100, 0110

Division #	Class #	Class Description	Rooster Name	Entry Fee

Entry Fee Payment Options:

- by e-transfer to fair@millarvilleracetrack.com
- by cheque, mailed to MRAS, Box 68, Millarville AB
T0L1K0 Attn: Fair Treasurer
- by cheque, cash, credit or debit payment through
the MRAS office
- check office hours by phone 403-931-3411

Donation to the Priddis & Millarville Fair: _____

Annual Exhibitor Fee: \$5.00

TOTAL ENTRY FEES ENCLOSED: _____

Competition Entry Fees

Tractor Pull: \$20 per person for first tractor. Additional tractors \$ 5 each

Honey: \$5 per class

Horse Costume: \$5 per class

Licked Salt Block: \$5 per class

Rooster Crowing: \$5 per rooster

LIGHT HORSE ENTRY FORM

ENGLISH, WESTERN, GYMKHANA

ENTRY DEADLINE: AUGUST 6, 2025

Please use one entry form per horse/rider combination.

Entries can also be submitted online at: <https://www.assistexpo.ca/priddis-millarville-fair> starting June 1st.

See entry fee payment options at bottom of this page.

Exhibitor Name: _____ Phone: _____

Address: _____ City: _____ Postal Code: _____

Email: _____ Age of Exhibitor as of Jan 1, 2025 (Jr Only): _____

This is the first year I've entered the Fair as an Exhibitor: YES ☐ NO ☐

Please choose one of the following options for prize payouts if you should win:

- ☐ Accept an e-transfer at this email address : _____ (if different from above)
- ☐ Accept a cheque made out to : _____ (if different from above)
- ☐ Donate my winnings to the Fair to help cover Fair expenses

DIVISION 0600 - 0820

Division #	Class #	Class Description	Horse Name	Entry Fee
Subtotal:				

Entry Fee Payment Options:

- by e-transfer to fair@millarvilleracetrack.com
- by cheque, mailed to MRAS, Box 68, Millarville
AB T0L1K0 Attn: Fair Treasurer
- by cheque, cash, credit or debit payment
through the MRAS office
- check office hours by phone 403-931-3411

Donation to the Priddis & Millarville Fair: _____

Annual Exhibitor Fee: \$5.00

TOTAL ENTRY FEES ENCLOSED: _____

**ARTS & HANDICRAFTS, FIELD CROPS, FLOWERS, HOME COOKING & BAKING,
PHOTOGRAPHY, VEGETABLES & FRUIT, WOODWORKING**

Please use one entry form per exhibitor.

See entry fee payment options at bottom of this page.

Email: _____ Age of Exhibitor as of Jan 1, 2025 (Jr Only): _____

☐ I acknowledge that bench exhibits are to remain in place until 4:00 p.m. on Sunday, August 17

Division #	Class #	Class Description	Entry Fee
Subtotal			

Entry Fee Payment Options:

Entry Fee Payment Options:

- by e-transfer to fair@millarvilleracetrack.com
- by cheque, mailed to MRAS, Box 68, Millarville
AB T0L1K0 Attn: Fair Treasurer
- by cheque, cash, credit or debit payment
through the MRAS office
- check office hours by phone 403-931-3411

TOTAL ENTRY FEES ENCLOSED:

FIBRE ARTS ENTRY FORM

ENTRY DEADLINE: AUGUST 6, 2025

Please use one entry form per exhibitor.

Entries can also be submitted online at: <https://www.assistexpo.ca/priddis-millarville-fair> starting June 1st.
See entry fee payment options at bottom of this page.

Exhibitor Name: _____ Phone: _____

Address: _____ City: _____ Postal Code: _____

Email: _____ Age of Exhibitor as of Jan 1, 2025 (Jr Only): _____

This is the first year I've entered the Fair as an Exhibitor: YES ☐ NO ☐

Please choose one of the following options for prize payouts if you should win:

- ☐ Accept an e-transfer at this email address : _____ (if different from above)
☐ Accept a cheque made out to : _____ (if different from above)
☐ Donate my winnings to the Fair to help cover Fair expenses

☐ I acknowledge that bench exhibits are to remain in place until 4:00 p.m. on Sunday, August 17

NOTE: For Skill Levels Use: 1 = Beginner, 2 = Intermediate, 3 = Advanced

FIBRE ARTS DIVISIONS 6000-6360

Division #	Class #	Skill Level	Kit: Y/N	Class Description	Entry Fee
				Subtotal:	

Entry Fee Payment Options:

- by e-transfer to fair@millarvilleracetrack.com
- by cheque, mailed to MRAS, Box 68, Millarville
AB T0L1K0 Attn: Fair Treasurer
- by cheque, cash, credit or debit payment
through the MRAS office
- check office hours by phone 403-931-3411

Donation to the Priddis & Millarville Fair: _____

Annual Exhibitor Fee: \$5.00

TOTAL ENTRY FEES ENCLOSED: _____

ENTRY DEADLINE: AUGUST 6, 2025
Please use one entry form per exhibitor.

Please use one entry form per exhibitor.

Exhibitor Name: _____ Phone: _____

Address: _____ City: _____ Postal Code: _____

This is the first year I've entered the Fair as an Exhibitor: YES ☐ NO ☐

Please choose one of the following options for prize payouts if you should win:

☐ Accept an e-transfer at this email address : _____ (if different from above)

☐ Accept a cheque made out to : _____ (if different from above)

☐ Donate my winnings to the Fair to help cover Fair expenses

Division #	Class #	Breed	Animals Name	CLRC #	Tattoo	Entry Fee
Entry Fee Payment Options:						Subtotal

Entry Fee Payment Options:

- by e-transfer to fair@millarvilleracetrack.com
- by cheque, mailed to MRAS, Box 68, Millarville
AB T0L1K0 Attn: Fair Treasurer
- by cheque, cash, credit or debit payment
through the MRAS office
- check office hours by phone 403-931-3411

Subtotal

Donation to the Priddis & Millarville Fair:

Annual Exhibitor Fee: \$5.00

TOTAL ENTRY FEES ENCLOSED:

POULTRY, WATERFOWL & PIGEONS ENTRY FORM

ENTRY DEADLINE: AUGUST 6, 2025

Please use one entry form per exhibitor.

Entries can also be submitted online at: <https://www.assistexpo.ca/priddis-millarville-fair> starting June 1st.
See entry fee payment options at bottom of this page.

Exhibitor Name: _____ Phone: _____

Address: _____ City: _____ Postal Code: _____

Email: _____ Age of Exhibitor as of Jan 1, 2025 (Jr Only): _____

This is the first year I've entered the Fair as an Exhibitor: YES ☐ NO ☐

☐ I have read and will abide by the Priddis & Millarville Fair Code of Conduct for animal care

Please choose one of the following options for prize payouts if you should win:

- ☐ Accept an e-transfer at this email address : _____ (if different from above)
☐ Accept a cheque made out to : _____ (if different from above)
☐ Donate my winnings to the Fair to help cover Fair expenses

NOTE: For Sex Use: C = Cock (male over 1 year) , H = Hen (female over 1 year) , K = Cockerel (male under 1 year), P = Pullet (female under 1 year)

DIVISION 0300 - 0385

Division #	Class #	Class Description	Breed	Variety	Sex	Band #	Entry Fee
Subtotal							

Entry Fee Payment Options:

- by e-transfer to fair@millarvilleracetrack.com
- by cheque, mailed to MRAS, Box 68, Millarville
AB T0L1K0 Attn: Fair Treasurer
- by cheque, cash, credit or debit payment
through the MRAS office
- check office hours by phone 403-931-3411

Donation to the Priddis & Millarville Fair: _____

Annual Exhibitor Fee: \$5.00

TOTAL ENTRY FEES ENCLOSED: _____

RABBIT ENTRY FORM

ENTRY DEADLINE: AUGUST 6, 2025

Please use one entry form per exhibitor.

Entries can also be submitted online at: <https://www.assistexpo.ca/priddis-millarville-fair> starting June 1st.
See entry fee payment options at bottom of this page.

Exhibitor Name: _____ Phone: _____

Address: _____ City: _____ Postal Code: _____

Email: _____ Age of Exhibitor as of Jan 1, 2025 (Jr Only): _____

This is the first year I've entered the Fair as an Exhibitor: YES ☐ NO ☐

☐ I have read and will abide by the Priddis & Millarville Fair Code of Conduct for animal care

Please choose one of the following options for prize payouts if you should win:

- ☐ Accept an e-transfer at this email address : _____ (if different from above)
☐ Accept a cheque made out to : _____ (if different from above)
☐ Donate my winnings to the Fair to help cover Fair expenses

DIVISIONS 0400 - 0410

Div #	Class #	Name of Rabbit	Breed	Sex M/F	Birth Date mm/dd/yy	Weight lbs	Entry Fee
Subtotal							

Entry Fee Payment Options:

- by e-transfer to fair@millarvilleracetrack.com
- by cheque, mailed to MRAS, Box 68, Millarville
AB T0L1K0 Attn: Fair Treasurer
- by cheque, cash, credit or debit payment
through the MRAS office
- check office hours by phone 403-931-3411

Donation to the Priddis & Millarville Fair: _____

Annual Exhibitor Fee: \$5.00

TOTAL ENTRY FEES ENCLOSED: _____

ENTRY DEADLINE: AUGUST 6, 2025
Please use one entry form per exhibitor.

Exhibitor Name: _____ Phone: _____

Address: _____ City: _____ Postal Code: _____

Email: _____ Age of Exhibitor as of Jan 1, 2025 (Jr Only): _____

This is the first year I've entered the Fair as an Exhibitor: YES ☐ NO ☐

☐ I have read and will abide by the Priddis & Millarville Fair Code of Conduct for animal care

☐ Accept an e-transfer at this email address : _____ (if different from above)

☐ Accept a cheque made out to : _____ (if different from above)

☐ Donate my winnings to the Fair to help cover Fair expenses

Division #	Class #	Class Description	Breed	RFID#	Entry Fee
				Subtotal	

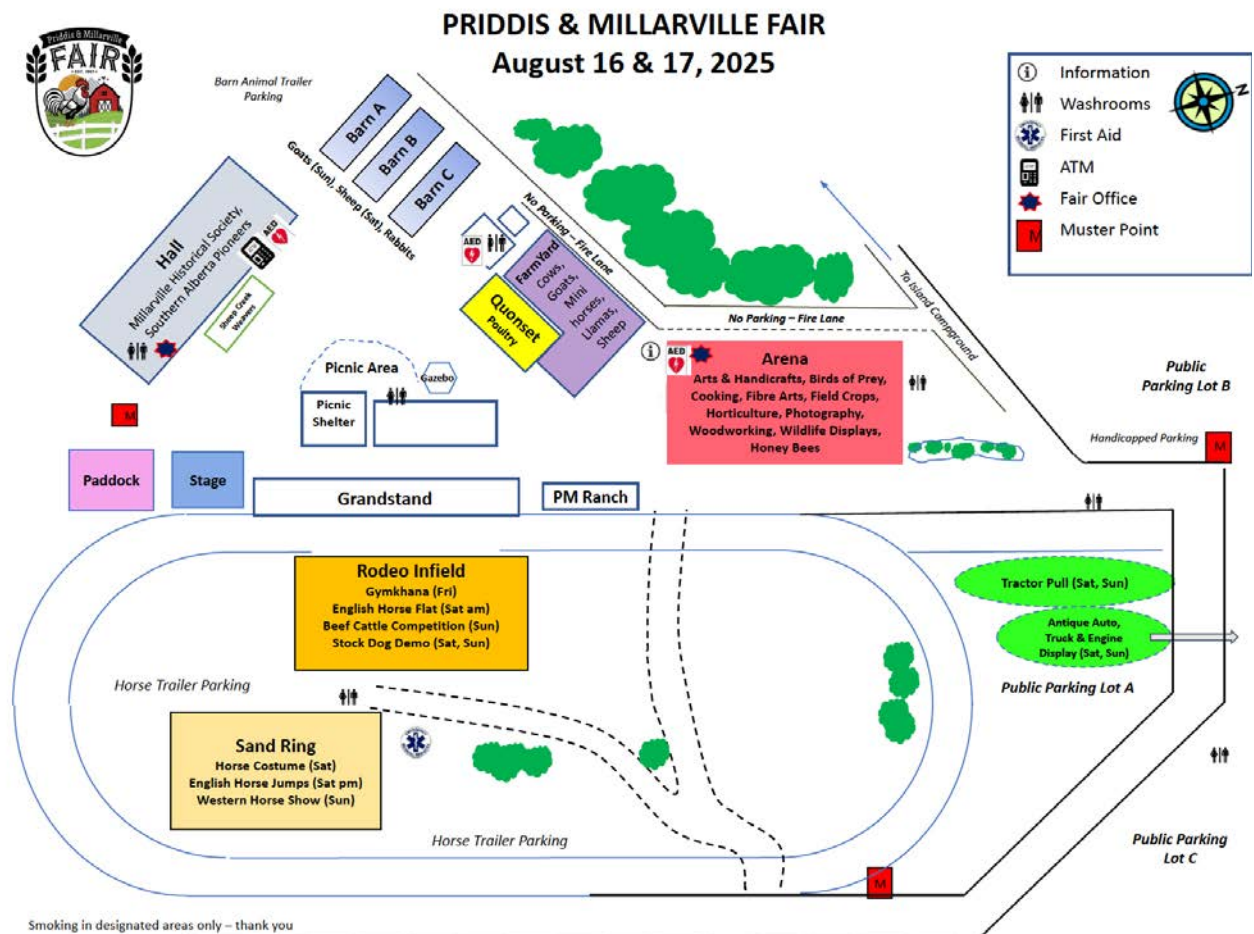
- by e-transfer to fair@millarvilleracetrack.com
- by cheque, mailed to MRAS, Box 68, Millarville
AB T0L1K0 Attn: Fair Treasurer
- by cheque, cash, credit or debit payment
through the MRAS office
- check office hours by phone 403-931-3411

Donation to the Priddis & Millarville Fair: _____

Annual Exhibitor Fee: \$5.00

TOTAL ENTRY FEES ENCLOSED:

MAP & FAIR COMMITTEE MEMBERS



FAIR COMMITTEE MEMBERS

Adam Buchholz	Callum McLeod	Hope Barakat	Lorraine Cathro	Saxon Evans
Adele DePauw	Carmen Peccie	Jackie White	Lorretta Stabler	Shannon Schneider
Amanda Diamond	Carol Papworth	Janet Scott	Marian Anton	Sheila Giles-Smith
Angie Dawson	Cathie Dallas	Jill Dakers	Nancy Seaman	Sheila Virgo
Arlene O'Brien	Chad Thomas	Julie Thomson	Nancy Simmons	Suzanne Sills
Arlene Visser	Danielle Bradish	Kathleen Arkes	Natasha Phillipson	Suzon Watkins
Barb Castell	Dawn Godfrey	Kathy McCabe	Patty Webb	Sylvia Checkley
Barb Larson	Don Roe	Kathy Sosnowski	Paul Rishaug	Todd Watkins
Barb Parker	Doreen Marthaller	Kayla Friesen	Ralph Onciul	Tylene Hay
Betty Foran	Doug Martin	Laura James	Sandi Scott	Yvonne Sterrenberg
Bill Jackson	Edie Pujo	Lindsay Estey	Saskia Knoll	

The Fair perseveres and succeeds because of our hard-working and fun loving volunteers, enthusiastic and creative exhibitors and the overwhelming support of our guests.

Thank you for being a part of our community.

CONGRATULATIONS

OUTSTANDING EXHIBITOR/CONTRIBUTOR AWARD RECIPIENTS

This Award recognizes individuals or families who have supported the success of the Fair over many years as volunteers, leaders, and/or role models, with a willingness to go above and beyond.



2024 RECIPIENT
Carol Papworth

PAST RECIPIENTS

2023 RECIPIENT: Suzanne Sills	2022 RECIPIENT: Gwen Blatz	2019 RECIPIENTS: Joyce Teskey Doreen Marthaller
2018 RECIPIENTS: Barb Godwin Neil & Di Bates Kathleen & Don Arkes Family	2017 RECIPIENTS: Ralph Onciul Karen Deck Jackie Rawn	2016 RECIPIENTS: Doug Mackie Susan Hicks Sage & Wyatt Runge
2015 RECIPIENTS: Shirley Goerlitz Suzon Watkins Rick Charlton	2014 RECIPIENTS: Myrna McKay Damon & Lisa Bates-Grover Family Donna Kendall	2013 RECIPIENTS: Cathie Scattery Lorraine & Ken Crebbin Family Judy Mackenzie
2012 RECIPIENTS: Lois Milner John Lockhart Kevin & Tina Powell Family Mary Ann Watson Elliott Mansell	2011 RECIPIENTS: Gerald & Sandra Bull Paul Teskey Janelle, Kayla, Kendra Mackenzie	2010 RECIPIENTS: Agnes Ball Gwen Blatz Emily Ritchie
2009 RECIPIENTS: Elizabeth Campbell & Families Joan & Allen Tosh & Family Marie & Andrew Wiebe & Family	2008 RECIPIENTS: Jill Stephenson & Family Jack & Betty Hervey	2007 RECIPIENTS: Bill & Dorothy Jackson & Family
2006 RECIPIENT: Linda Bull	2005 RECIPIENT: Fred Stroman	2004 RECIPIENTS: Stan & Betty Eckstrand
2003 RECIPIENTS: Murray Jackson Catherine Laycraft	2002 RECIPIENTS: Clarence & Karen Jones Family	2001 RECIPIENTS: Chub & Nita Foster Ashbacher Family
2000 RECIPIENTS: Jim & Dot McKevitt Melissa Cole	1999 RECIPIENT: Pearl Laycraft	1997 RECIPIENTS: Nelson Hoy Paul Rishaug
1996 RECIPIENTS: Barbara Cowling Patty Webb Ian Webb		



JOIN
THE
Fun

2025 MRAS Events

Campground Open - May 16 - October 13

Millarville Spring Market - May 10

Millarville Farmers' Market - June 21 - October 11

Millarville Races - July 1

Priddis & Millarville Fair - August 16 & 17

Millarville Christmas Market - November 6-9, & 13-16

Thanks to Our Valued Sponsor



We hope to see you at the Millarville Racetrack for the 119th Fair on August 15 & 16, 2026

"MRAS provides authentic family experiences and exceptional facilities which celebrate our agricultural heritage, inspiring a sense of belonging for the community."

SHAPING MEMORIES

